

# 2026 WHOLESALE CATALOG





**KANKAKEE**

• NURSERY CO. •



*Dear friends,*

*The page has flipped and the next chapter of the  
Kankakee Nursery Company story has begun.*

*After a full year's worth of celebrating our customers, our people and our history, we enter our 101st year in business with a groundswell of pride, appreciation and optimism for what's next. An enormous thank you to all of you who joined us in celebrating 100 throughout 2025!*

*With the festivities of our past concluded for now, our undivided attention has turned to our future. Each year, we seek out areas of improvement as well as growth, and welcome any and all feedback to help us meet these goals. If you've never bought from us before, or haven't in some time, I highly encourage you to schedule a tour with your sales rep to see first-hand some of the progressive changes we've made in just a few short years.*

*Moving forward, we know that both the economy and your ability to find consistent sources of plant material will continue to fluctuate. Our ownership team at Kankakee is wholeheartedly dedicated to be your stable and reliable source of the highest-quality trees and evergreens long into the future.*

*Just as a quality story requires strong characters, a quality business requires strong partners. All of us at Kankakee welcome the opportunity to make you a part of our new chapter.*

*Wishing you a successful 2026 and beyond,*

**Pete Worth**  
Sales Manager





# 2026 Trade Show Schedule



## MANTS

Baltimore, MD  
January 7-9

## InvigorateU

Bloomington, IL  
January 27-28

## Northern Green Expo

St. Paul, MN  
January 20-22

## Pro Green Expo

Denver, CO  
February 3-5

## Great Lakes Trade Expo

Grand Rapids, MI  
January 20-22

## Wisconsin NLA Annual Conference

Wisconsin Dells, WI  
February 5-6



We're a proud member of the following Associations:



Ornamental Growers Association of Northern Illinois



Illinois Association of Park Districts



ILLINOIS LANDSCAPE CONTRACTORS ASSOCIATION



COLORADO NURSERY & LANDSCAPE ASSOCIATION



INDIANA NURSERY & LANDSCAPE ASSOCIATION



NEBRASKA NURSERY AND LANDSCAPE ASSOCIATION





**Indiana Green  
Expo**  
Indianapolis, IN  
February 9-11

**iLandscape**  
Schaumburg, IL  
February 25-27

**Iowa Nursery  
& Landscape  
Association Shade  
Tree Short Course**  
Ames, IA  
February 17-19



## GENERAL INFORMATION

2026 Trade Show Schedule, Partnerships .....	2
Freight Costs and Plant Particulars .....	4
Container Sizing, Volume Discount Policy .....	5
Color Code Tags, Terms & Conditions .....	5
Kankakee Nursery Staff & Field Staff.....	6-9
Sales Staff and Territories .....	10-11
Plants for Problem Sites, Hardiness Zones.....	12
NEW Plants for 2026.....	13
Contact Information .....	Back Cover

## SHADE & ORNAMENTAL TREES

Acer .....	14-17
Aesculus, Alnus .....	18
Amelanchier, Asimina.....	19
Betula .....	20
Carpinus .....	21
Carya, Catalpa.....	22
Celtis.....	23
Cercis.....	23 & 26
Cladrastis.....	26
Crataegus .....	26-27
Ginkgo .....	27
Gleditsia .....	27-28
Gymnocladus, Koelreuteria .....	28
Liquidambar, Liriodendron, Maclura .....	29
Magnolia .....	29-30
Malus.....	30-33
Metasequoia .....	33
Nyssa .....	33-34
Ostrya, Platanus, Populus .....	34
Prunus .....	34-35
Ptelea.....	35
Quercus.....	35-38
Salix, Sassafras.....	38
Syringa, Taxodium.....	39
Tilia .....	39-40
Ulmus .....	41-42
Zelkova.....	42

## FLOWERING SHRUBS

Cornus, Cotinus, Hamamelis.....	43
Hydrangea.....	43-45
Syringa, Viburnum.....	45

## EVERGREENS

Buxus .....	46
Juniperus .....	46-47
Picea .....	47
Thuja .....	48-49



## 2026 Freight Costs

Approximate freight rates per semi-load for selected cities. **Rates on LTL are calculated off base rates and vary per load. \*\$100 per drop. Rates are estimates and subject to change.**

Ship to City	Freight Cost	Ship to City	Freight Cost	Ship to City	Freight Cost
Chicago-area range, South Side through North Side	\$700-\$850	Detroit, MI area	\$1,500	Peoria, IL	\$850
Bloomington, IL	\$800	Fort Collins, CO	\$3,300	Pittsburgh, PA	\$2,500
Boston, MA	\$3,500	Fort Wayne, IN	\$1,000	Quad Cities (IL, IA)	\$1,000
Cedar Rapids, IA	\$1,300	Grand Rapids, MI	\$1,200	Springfield, IL	\$900
Champaign, IL	\$700	Indianapolis, IN	\$1,000	St. Louis, MO	\$1,500
Cincinnati, OH	\$1,500	Kansas City, MO	\$2,500	Toronto, ON	\$2,200
Colorado Springs, CO	\$3,500	Little Rock, AR	\$2,800	Traverse City, MI	\$1,900
Columbus, OH	\$1,600	Madison, WI	\$1,100	Tulsa, OK	\$2,800
Dallas, TX	\$3,500	Milwaukee, WI	\$1,000	Twin Cities, MN	\$1,800
Denver, CO	\$3,300	Oklahoma City, OK	\$3,200		
Des Moines/Ames, IA	\$1,750	Omaha, NE	\$1,700		

## Plant Particulars

Kankakee Nursery ships plants all over the United States and Canada. These handy charts provide you with all the miscellaneous details necessary for setting up your plant delivery.

Plant Type	Plant Size	Diameter of Ball/Pot	Number of Plants to Fill a Semi	Estimated weight in pounds
Trees (Single Stem & Clump)	#15 Root Pouch	17"	250	100
	#20 Plastic Container	19.5"	160	140
	#25 Plastic Container	22.75"	140	200
	1.5"-1.75" & 5' BB	24"	110	250
	2" & 6-7' BB	26"	90	325
	2.5" & 8-9' BB	28"	70	500
	3" & 10' BB	32"	50	700
	3.5" & 12' BB	36"	35	1,000
	4" & 14' BB	40"	24	1,400
Arboretum/ Junipers	#15 Root Pouch	17"	250	100
	4' BB	18-20"	140	100
	5' BB	20-22"	120	150
	6' BB	22-24"	100	200
	7' BB	24-26"	90	250
	8' BB	26-28"	75	300

Note: Ball weights will increase significantly when wet.



# Container Sizing

In response to the new container sizing regulations for industry retailers, we have provided a chart of the containers we use in our production operation. The information listed below will help with your compliance to the Uniform Weights and Measures Law and the Uniform Packaging and Labeling Regulations.

Brand/Style	Trade Size	Actual Gallon	Liter
Classic	#10 Squat	10.7	40.4
Classic	#15	13.2	49.9
Classic	#20	19.6	74.2
Classic	#25	27.7	104.4
Root Pouch	#15	14.99	56.78
Root Pouch	#25	25.00	94.64

# Volume Discount Policy

Discount levels are based on previous year's sales volume paid within Kankakee Nursery's agreed upon terms.

\$20,000 - \$39,999 .....	4%	<i>Kankakee Nursery reserves the right to change or cancel the program at any time.</i>
\$40,000 - \$59,999 .....	6%	
\$60,000 - \$79,999 .....	8%	
\$80,000 - \$99,999 .....	10%	
\$100,000+ .....	12%	

# Color Code of Kankakee Nursery Tags

Clump & Multistem Trees/Evergreens		Single-stem Trees	
12"	blue	1.25"	white
15"	white	1.5"	orange
18"	orange	1.75"	yellow
2'	yellow	2"	red
30"	blue	2.5"	pink
3'	red	3"	blue
4'	pink	3.5"	white
5'	white	4"	orange
6'	orange		
7'	yellow		
8'	red		
10'	pink		
12'	blue		



# Terms & Conditions

- Usual trade terms to customers with established credit.
- First order always COD.
- Visa, MasterCard, American Express and Discover accepted on COD orders.
- Interest is charged on past-due accounts. A finance charge of 1.5% per month (annual interest rate 18%) is applied to invoices unpaid at the end of the month following the month in which the invoice is due.

## PO#’s

If one is needed, we require all PO#s to be sent to us at least 24 hours in advance of delivery date.

## Tagging

Tagging stock in the field is subject to the approval of management. A charge of 10% will be added to the cost of items tagged for digging. Tagged trees are considered purchased and may not be canceled in any circumstance. All spring tagging appointments **must take place before March 1, no exceptions.**

## Holding Charges

Please pick up plant material when ready. Starting on June 1, a holding charge of \$2 per tree per workday will be assessed to spring-dug orders that have not been picked up. Additionally, orders not picked up in a timely fashion may be placed back in inventory and sold.

## Pick Up Times

As of Fall 2025, we are now assigning pick up times for all pick up orders. Late pick up arrivals may need to wait until subsequent scheduled customers are loaded.

## Truck Delivery

We offer trucking (semi) service to any part of the United States or

Canada. A minimum order of \$2,000 is necessary for this service. All goods travel at the purchaser's risk and expense. See chart on page 4 for shipping rates.

## Unloading of Material

Customers are required to have the manpower and equipment necessary to unload the material. We charge an unloading detention fee of \$75 per hour after 2 hours.

## Cancellations

We do not accept cancellations for balled and burlapped material that has already been dug.

## Claims

We shall not entertain claims for any cause after goods have been accepted or when a report is not made in writing within 10 days after arrival of stock.

## Summer Digging

A 15% charge will be added to the price of all summer-dug trees. We assume no responsibility for plants purchased for out-of-season digging.

## Guarantee

If any nursery stock proves untrue to the description or variety name under which it is sold, Kankakee Nursery will, with proper proof, replace such nursery stock or refund the original amount paid. We shall in no case be liable for any sum greater than the amount originally paid for said nursery stock.

## Picture Requests

We do our best to return photo requests in as timely a manner as possible. Please be aware there will be a longer turnaround time on photo requests in the spring and fall. Large requests or requests in spring or fall may incur a fee.



# Kankakee Nursery Staff



## Steven Curren Jr.

**Production Manager**  
[stevejr@kankakeenursery.com](mailto:stevejr@kankakeenursery.com)

Steve has been with Kankakee Nursery since 1996 and now serves as our Production Manager after getting his start in container shrub and pot-in-pot tree production. Steve received his degree in plant and soil sciences from Southern Illinois University.



## John Worth

**Inventory Manager**  
[johnw@kankakeenursery.com](mailto:johnw@kankakeenursery.com)

John serves as our inventory manager – tracking, selecting, and sizing our inventory in all its sizes and forms. He holds a degree in business management/entrepreneurship from Saint Louis University.

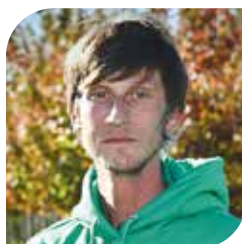


## Amy Curren Baker

**Office Manager**  
[amy@kankakeenursery.com](mailto:amy@kankakeenursery.com)

P: 815-614-5568

Amy joined Kankakee Nursery 24 years ago after graduating with a degree in marketing from Eastern Illinois University. As office manager, Amy handles all of our AR/AP and HR responsibilities.



## Nick Worth

**Crew Leader**

Nick supervises numerous aspects of plant care at the nursery. His daily duties include irrigation maintenance, weed control and machine operation.



## Chuck Davis, ICN Pro

**Propagation Manager**  
[chuckd@kankakeenursery.com](mailto:chuckd@kankakeenursery.com)

Chuck has 39 years of experience in nursery production, over 30 of them at Kankakee. He holds a degree in ornamental horticulture from University of Illinois.



## Jeff Franklin

**Weed & Pest Control/Facilities Manager**  
[jefff@kankakeenursery.com](mailto:jefff@kankakeenursery.com)

Jeff began his Kankakee career in 1999 as a tractor driver and now runs our weed and pest control program, along with our facilities and equipment. Jeff received his degree in Agriculture from Purdue University and also runs an organic vegetable farm, Deer Creek Organics.



## Tim Lagesse

**Shipping Manager**  
[tim@kankakeenursery.com](mailto:tim@kankakeenursery.com)

Tim runs the loading dock and shipping yard for Kankakee, while also serving as quality control for the thousands of plants shipped each year. He has been with Kankakee for 46 years.

***We would like to thank all our employees  
for their loyalty to our company!***





## Employee Service Anniversaries

### 45+ YEARS

Agustin Ayala  
Abel Cintora  
Pedro Diaz  
Jose Angel G. Guzman  
Tim J. Lagesse

### 40+ YEARS

David Andrade Cintora  
Jose Andrade  
Reimundo Andrade Cintora  
Salomon Avalos Gaytan  
Jose Baltazar Alvarado  
Trinidad Gaytan Alvarado

### 35+ YEARS

Leopoldo Aguilar Zamora  
Jose R. Avalos Gaytan  
James Davis  
Mario G. Camargo  
Jesus Moreno

### 30+ YEARS

Gaudencio Z. Avalos  
Robert Davis  
Jeff Franklin  
J. Guadalupe Medina Z

### 25+ YEARS

Angel Andrade Campos  
Silviano Campos Andrade  
Rodolfo Gonzalez Andrade  
Guadalupe Ruiz

### 20+ YEARS

Benjamin Barbosa  
J. Jesus Carmona-Vallejo  
Hubelio Cintora  
Guillermo Ortiz  
Santiago Padilla  
Ramon Zarate Jr.

### 10+ YEARS

Rosalina Ayala Cintora  
Blanca E. Campos Andrade  
Jose F. Gonzalez Gaytan  
Artemio Guerrero  
Michael Lesage  
Camelia Lopez  
Marcela Medina Desantoyo  
Juana Orozco

### 5+ YEARS

Roberto Ayala  
Araceli Andrade  
Josefina Cintora  
Bulmaro Gonzalez Moreno  
Angel O. Hernandez  
Adela Lopez  
Eduardo Medina  
Michael Porter  
Martha Orozco Rodriguez  
Silvestre C. Zavala  
Manuel Zavala Luna





# Kankakee Nursery Field Crew

Everyone knows how difficult it's been to find hardworking, conscientious, and reliable employees over the last couple of years. We would not function without the effort and care that each and every one of our loyal employees puts into their work. We are thankful for them every day and are extremely lucky they are a part of the Kankakee Nursery family.



**Agustin Ayala**

**Field Production Supervisor**

As field production supervisor, Agustin leads a wide array of production duties including irrigation, planting and bare root digging. He has been at Kankakee for 47 years and also serves as our field personnel manager.



**Jose R Avalos Gaytan**

**Field Operations Supervisor**

"Beto" started at Kankakee in 1989 and coordinates the transport of all of our dug trees from the field to the loading dock. In the summer, he helps lead our tree planting and assists with tagging and quality control.



**Pedro Diaz**

**Pruning and Bare Root Supervisor**

Our longest-tenured employee, Pedro has been with Kankakee for 50 years. He is in charge of tree pruning in the field as well as maintaining the tens of thousands bare root trees we propagate and purchase.



**Angel Andrade Campos**

**Tree Digging Supervisor**

With Kankakee since 2001, Angel worked for years in propagation before recently taking on the large task of managing our tree harvest. Angel helps tag and track our tens of thousands of field-grown trees every year.



**Reyes Cintora**

**Evergreen Supervisor**

With over four decades of shrub digging experience, Reyes now focuses exclusively on managing our evergreen digging and shearing. He's been with Kankakee for 42 years.



**Ramon Zarate Jr**

**Container Supervisor**

Along with Balta, Ramon oversees all of our container production including potting, irrigation and order pulling. He also assists with bare root tree storage and planting. Ramon has been with Kankakee nursery for 23 years.



**Balta Alvarado**

**Container Supervisor**

Balta has been with Kankakee for 40 years, working predominantly in our container plants. He is hands-on with all aspects of our container operation and also assists in tree planting.



**Silviano Campos Andrade**

**Evergreen Digging Supervisor/  
Truck Loading**

'Silvy' has been a member of the Kankakee family since 1997. He supervises our evergreen digging operation, ensuring every ball is dug with precision. He is also one of our main truck loaders, loading hundreds of semi's each year with Kankakee.



**David Andrade Cintora**

**Truck Loading & Tree Budding  
Supervisor**

A jack of all trades, David is our go-to truck loader as well as an expert tree grafter. Check out our YouTube page to see some of David's grafting skills. He's been with us for 43 years.





Todo sabe lo difícil que ha sido encontrar empleados trabajadores, concienzudos y fiables en los últimos años. No funcionaremos sin el esfuerzo y cuidado que cada uno de nuestros fieles empleados ponen en su trabajo. Estamos agradecidos por ellos todos los días y tenemos mucha suerte de que sean parte de la familia de Kankakee Nursery.



### **Jose Batrez Jr**

#### **Contract Tree Digger**

Jose now leads our spring and fall B&B tree harvest. This will be his 16th year harvesting trees at Kankakee.



### **Jim Davis**

#### **Head Mechanic**

Our head mechanic and with us for 35 years, Jim and his crew work year-round to ensure our machinery is operating at full capacity.



### **Mike Lesage**

#### **Mechanic**

Mike assists in maintaining our nursery fleet and specializes in electrical diagnostics and repair. He's been a member of the Kankakee team since 2007.



### **David Propes**

#### **Mechanic**

David joined the mechanic team in 2023 and assists Jim and Mike with anything from fueling machines to general repair and maintenance.

## **The Kankakee Nursery extension staff that hauls and delivers for the nursery.**



### **Bill Shives**

#### **Shives Trucking**

While not technically an employee, Bill has hauled loads all over the Midwest for Kankakee Nursery for more than 30 years. Bill is so familiar with our customers, he's been known to prepare the coffee for their office when he arrives.



### **Pat Cooksey**

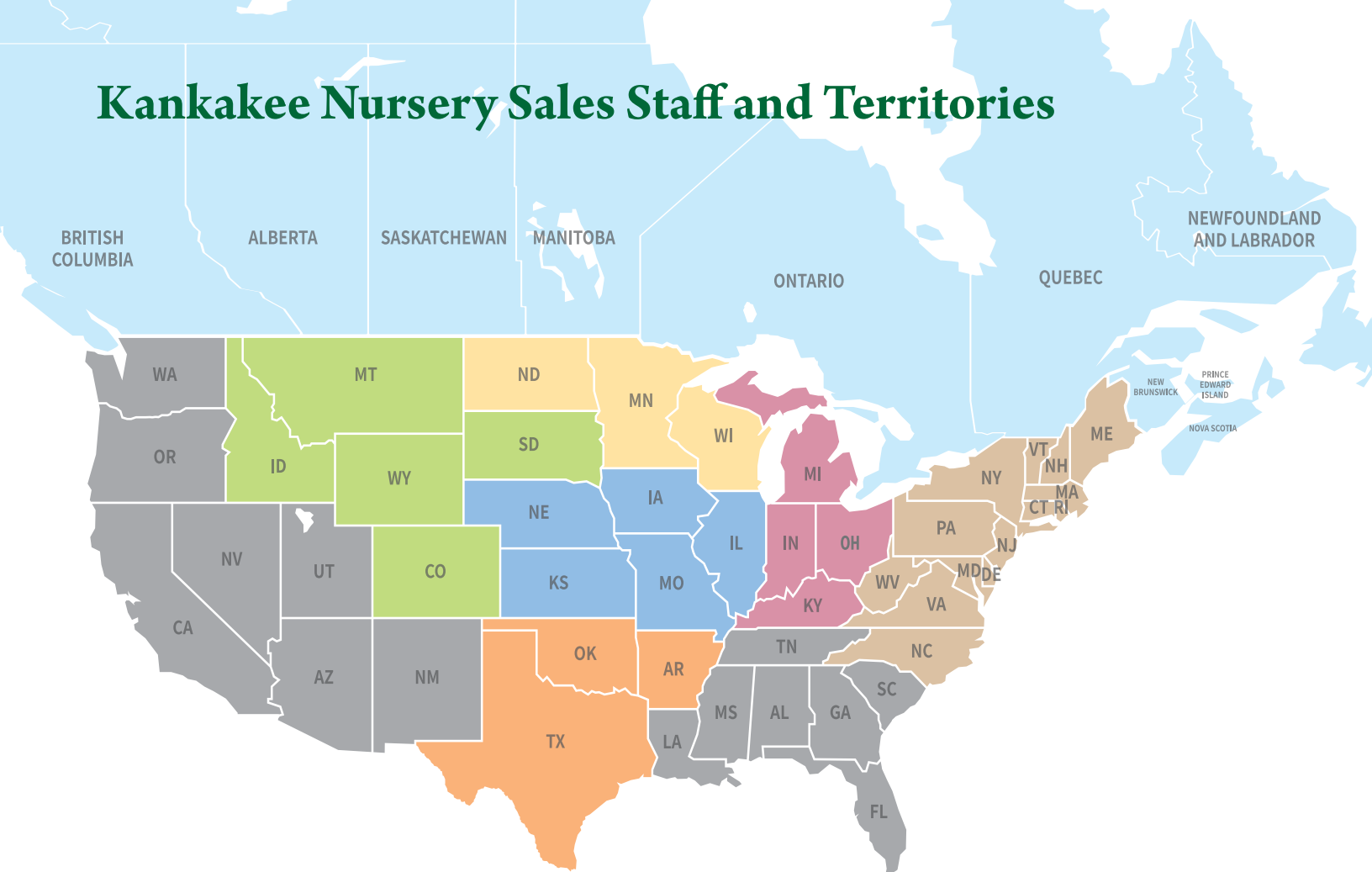
#### **Cooksey Trucking**

Although he officially started his own company in 2015, Pat has delivered loads for Kankakee since 1999.





# Kankakee Nursery Sales Staff and Territories



## Pete Worth

**Sales & Marketing Manager**  
**Territory: (Canada)**

[petew@kankakeenursery.com](mailto:petew@kankakeenursery.com)

P: 815-614-5556

Pete joined Kankakee as an inside sales representative in the summer of 2009 after receiving his bachelor's degree from Marquette University. In addition to his sales duties, Pete designs our email marketing campaigns and maintains our constantly-expanding website.



## Michael Porter

**IL Certified Arborist 4325A**

**Territory:**  
**(IL, IA, NE, KS, MO)**

[michaelp@kankakeenursery.com](mailto:michaelp@kankakeenursery.com)

C: 815-391-0987

Michael Porter began his Kankakee Nursery career in August of 2021 and has over 30 years of experience in the green industry. Michael has a degree in horticulture from the University of Michigan.



## Steve Wagner

**Territory:**  
**(CT, DE, MA, MD, ME, NC, NH, NJ, NY, PA, RI, VA, VT, WV)**

[stevefortrees@live.com](mailto:stevefortrees@live.com)

C: 856-725-1462

Steve joined the team in spring of 2024 and is now our inaugural salesperson for the East coast. Steve is a resident of New Jersey and has over 40 years of green industry experience, including over 30 in nursery production. Over his career, he has contributed his vast industry knowledge in leadership positions within multiple New England horticultural associations.



## David Kieser

**Territory: (IN, KY, MI, OH)**

[david@davidkcompany.com](mailto:david@davidkcompany.com)

C: 260-750-2197

David joined Kankakee Nursery in July of 2023 as our new representative in Indiana, Michigan, Ohio and Kentucky. He brings with him nearly 30 year's experience in the green industry, including landscaping and landscape design. He has a degree in horticulture from the University of Illinois at Urbana-Champaign.







## Preston Dyer

**Territory: (AR, OK, TX)**

**preston@kankakeenursery.com**

C: 630-862-4555

Preston hopped on board the Kankakee team in September of 2023 as our first-ever sales rep in the South-Central U.S. Preston has over 20 year's experience in horticulture and agriculture sales and carries a deep-rooted passion for people and the green industry.



**The Kankakee Nursery sales team prides itself in its wealth of horticultural experience to help you with your plant needs.**

**Jon Gerber is our latest addition to our sales team. Jon took over as a sales rep in the Rocky Mountain area in the summer of 2025 and we are thrilled to have him on the Kankakee team!**

***Welcome Jon!***

## Tim Bostian

**Territory: (MN, ND, WI)**

**tim@bostianhort.com**

C: 630-414-4797

Tim joined the Kankakee family in the summer of 2024, taking over servicing customers in Minnesota and Wisconsin. He holds a bachelor's degree from South Dakota State University and has over 20 years of industry experience in sales and management at various nurseries and landscape companies across the country.



## Jon Gerber

**Territory:  
(CO, ID, MT, SD, WY)**

**jon@gerberhort.com**

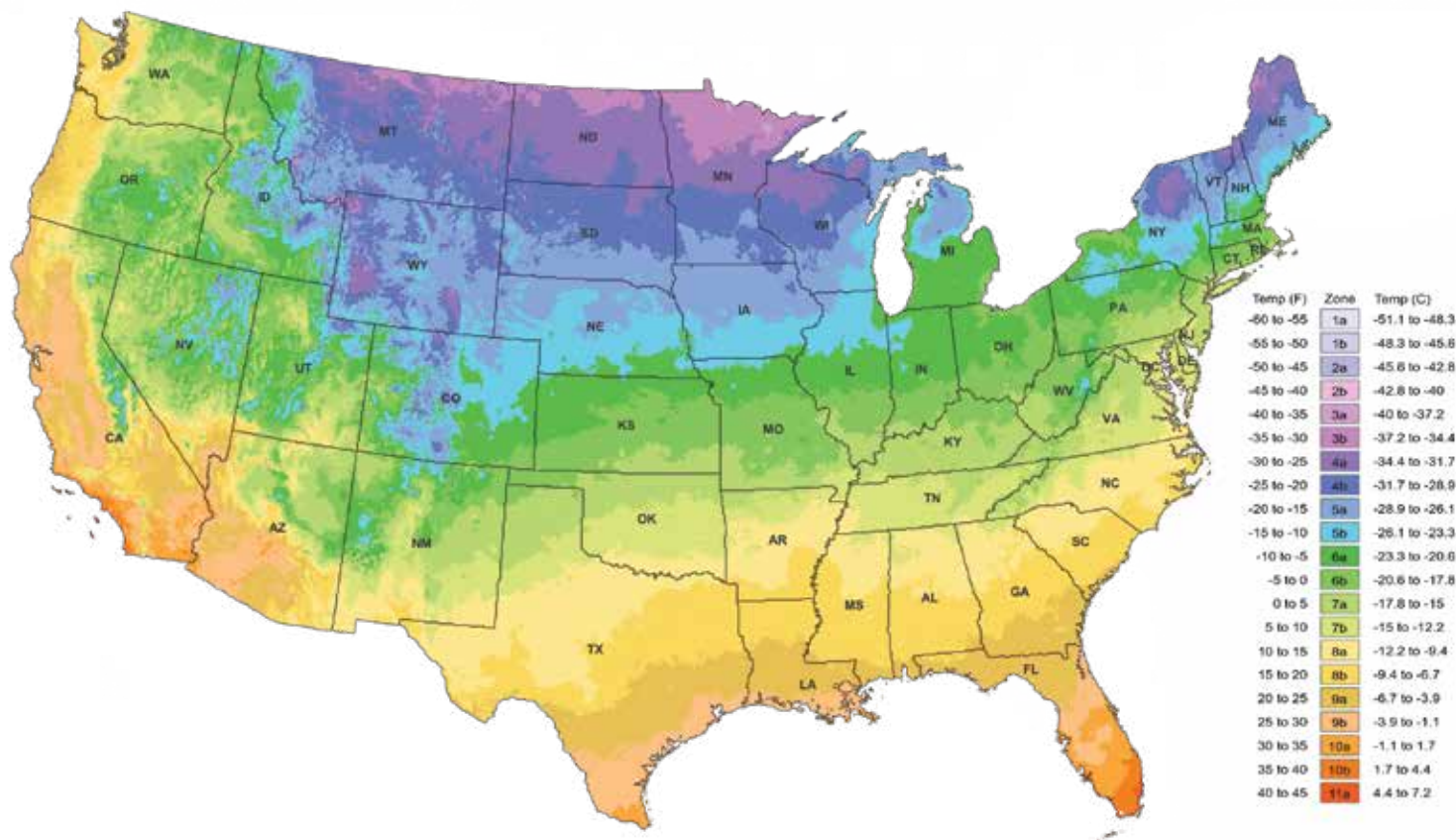
C: 303-710-7924

Jon is a graduate of South Dakota State University and veteran of the Navy. He began full time outside sales in 2019, but his 23 years of experience in the Colorado nursery industry also includes time spent in shipping, purchasing and sales management.





# USDA Plant Hardiness Zone Map



## Plants for Problem Sites

### SALT TOLERANT TREES

Amelanchier (Serviceberry)  
Catalpa  
Gleditsia (Honeylocust)  
Gymnocladus (Kentucky Coffeetree)  
Syringa Ivory Silk Lilac  
Syringa Japanese Tree Lilac  
Taxodium (Bald Cypress)

### SHADE TOLERANT TREES

Acer Palmatum (Japanese Maple)  
Acer Saccharum (Sugar Maple)  
Aesculus Ohio Buckeye  
Amelanchier (Serviceberry)  
Carpinus (Hornbeam)  
Cercis (Redbud)  
Nyssa (Blackgum)  
Ostrya (Hophornbeam/Ironwood)  
Platanus (Planetree/Sycamore)  
Quercus Swamp White Oak  
Salix Niobe Willow

### WET SITE TREES

Acer Rubrum (Red Maple)  
Aesculus Ohio Buckeye  
Betula (Birch)  
Quercus bicolor Swamp White Oak  
Quercus ellipsoidalis Northern Pin Oak  
Salix Niobe Willow  
Taxodium (Bald Cypress)

### DRY SITE TREES

Acer Ginnala (Amur Maple)  
Celtis (Hackberry)  
Crataegus (Hawthorn)  
Gleditsia (Honeylocust)  
Ulmus (Elm)

### SALT TOLERANT EVERGREENS

Juniperus (Juniper)

### SHADE TOLERANT EVERGREENS

Buxus (Boxwood)  
Juniperus Hillspire Juniper  
Picea Norway Spruce  
Thuja Brabant Arborvitae  
Thuja Green Giant Arborvitae  
Thuja Technito® Arborvitae

### WET SITE EVERGREENS

Thuja (Arborvitae)

### DRY SITE EVERGREENS

Juniperus (Juniper)





**Dakota Pinnacle® Birch**

*Betula platyphylla 'Fargo'*

**Pink Heartbreaker  
Weeping Redbud**

*Cercis canadensis 'Pink'*

**Northern Acclaim®  
Honeylocust**

*Gleditsia triacanthos 'Harve'*

**American Sweetgum**

*Liquidambar styraciflua*

**Ruby Dayze® Crabapple**

*Malus 'JFS KW139MX'*

**Beacon® Oak**

*Quercus bicolor 'Bonnie and Mike'*

**American Dream® Oak**

*Quercus bicolor 'JFS-KW12'*

**K.B. Crystal Oak**

*Quercus bicolor 'KB Crystal'*

**Kousa Chinese Dogwood**

*Cornus kousa*

**Little Quick Fire  
Hydrangea Tree**

*Hydrangea paniculata 'SMHPLQF'*



# TREES

*Acer campestre*



## Hedge Maple ☉ ☐

Height: 25'-35' Spread: 25'-35'  
Shape: Rounded; dense  
Foliage: Rich green  
Zones: 5-8

Sizes
2.5" BB
3" BB
3.5" BB
4" BB

*Acer ginnala 'Flame'*



## Flame Amur Maple ☉ ☐

Height: 15'-20' Spread: 15'-20'  
Shape: Rounded  
Foliage: Fiery red in fall  
Zones: 3-7

Sizes
4' Multi-stem BB
5' Multi-stem BB
6' Multi-stem BB
7' Multi-stem BB
8' Multi-stem BB

*Acer x freemanii 'Jeffersred'*



## Autumn Blaze® Maple ☉

Height: 50' Spread: 40'  
Shape: Dense; round  
Foliage: Orange/red in fall  
Zones: 4-7

Sizes		
1.75" BB	#25 1.5"	1.5" #25 RP
2" BB	#25 1.75"	1.7" #25 RP
2.5" BB	#25 2"	2" #25 RP
3" BB		#15 RP
3.5" BB		
4" BB		

*Acer miyabei 'Morton'*



## State Street™ Maple ☉

Height: 30' Spread: 20'  
Shape: Oval to rounded; dense  
Foliage: Thick in summer; yellow in fall  
Zones: 4-8

Sizes	
1.75" BB	#25 1.5"
2" BB	#25 1.75"
2.5" BB	#25 2"
3" BB	
3.5" BB	
4" BB	

*Acer x freemanii 'Marmo'*



## Marmo Maple ☉ ☐

Height: 70' Spread: 35'  
Shape: Upright ; oval to broad columnar  
Foliage: Green; gray underside  
Zones: 4-7

Sizes	
1.75" BB	3" BB
2" BB	3.5" BB
2.5" BB	4" BB

*Acer palmatum 'Bloodgood'*



## Bloodgood Japanese Maple ☉ ☐

Height: 15'-20' Spread: 15'-20'  
Shape: Rounded to broad-rounded; low branching  
Foliage: Deep reddish-purple  
Zones: 5-8

Size
# 10 RP



# TREES

*Acer palmatum dissectum*  
'Tamukeyama'



**Tamukeyama**  
**Japanese Maple** ●●

Height: 6'-8' Spread: 8'-12'  
Shape: Rounded, shrubby  
Foliage: Deep reddish purple  
Zones: 5-8

Size
# 10 RP

*Acer platanoides* 'Columnare'



**Columnar Norway**  
**Maple** ●

Height: 60' Spread: 15'-20'  
Shape: Narrow  
Foliage: Dark green, yellow in fall  
Zones: 3-7

Sizes
1.75" BB
2" BB
2.5" BB
3" BB

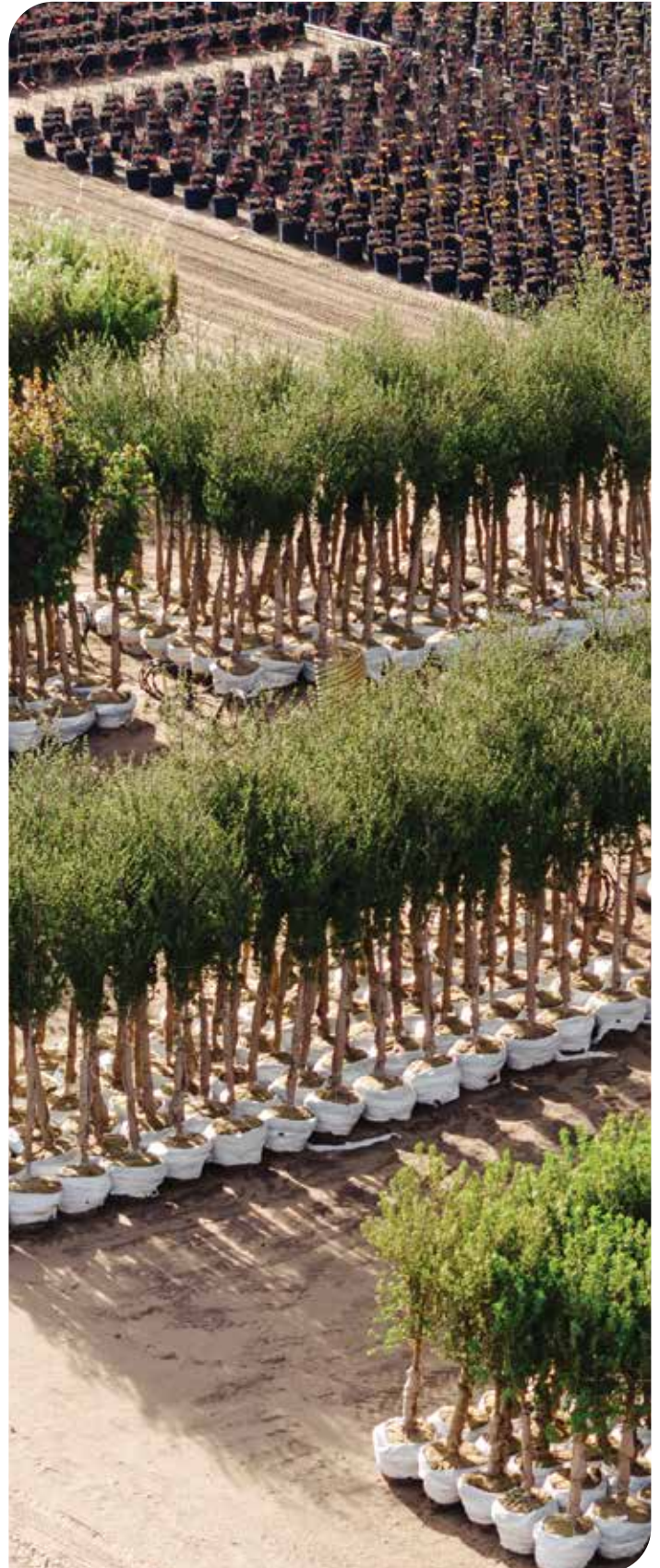
*Acer platanoides* 'Deborah'



**Deborah Maple** ●

PP 4,944  
Height: 50' Spread: 45'  
Shape: Rounded-broad rounded outline  
Foliage: Red new growth, turns dark green  
Zones: 4-7

Sizes
1.5" BB
1.75" BB
2" BB
2.5" BB
3" BB





# TREES

*Acer platanoides* 'Emerald Queen'



## Emerald Queen Maple

Height: 50' Spread: 40'  
Shape: Rounded; oval outline  
Foliage: Glossy green  
Zones: 4-7

Sizes
1.5" BB
1.75" BB
2" BB
2.5" BB
3" BB

*Acer rubrum* 'October Glory'



## October Glory Red Maple

Height: 40'-50' Spread: 40'-50'  
Shape: Round-headed  
Foliage: Green; orange to red in fall  
Zones: 5-8

Sizes	
1.5" BB	2.5" BB
1.75" BB	3" BB
2" BB	

*Acer rubrum* 'Armstrong'



## Armstrong Maple

Height: 50'-70' Spread: 15'  
Shape: Narrow Columnar  
Foliage: Yellow-orange in fall  
Zones: 3-7

Sizes	
1.75" BB	#25 1.5"
2" BB	#25 1.75"
2.5" BB	#25 2"
3" BB	
3.5" BB	

*Acer rubrum* 'Franksred'



## Red Sunset® Red Maple

Height: 40'-50' Spread: 35'-40'  
Shape: Rounded to oval  
Foliage: Green; red in fall  
Zones: 4-7

Sizes
1.75" BB
2" BB
2.5" BB
3" BB

*Acer rubrum* 'Bowhall'



## Bowhall Red Maple

Height: 40' Spread: 15'  
Shape: Upright, narrow  
Foliage: Dark green to yellow/orange/red in fall  
Zones: 4-8

Sizes	
1.75" BB	#25 1.5"
2" BB	#25 1.75"
2.5" BB	#25 2"
3" BB	

*Acer rubrum* 'Frank Jr.'



## Redpointe® Red Maple

PP 16769  
Height: 45' Spread: 30'  
Shape: Broadly pyramidal  
Foliage: Dark green; bright red in fall  
Zones: 5-8

Sizes		
1.75" BB	#25 1.5"	1.5" #25 RP
2" BB	#25 1.75"	1.7" #25 RP
2.5" BB	#25 2"	2" #25 RP
3" BB		
3.5" BB		
4" BB		

**NEW!** New Product

**N** Native to Illinois

**Nativar** Native Cultivar

**☉** Full Sun

**☪** Partial Shade

**●** Full Shade

**BB** Balled & Burlapped

**RP** Root Pouch



# TREES

*Acer saccharum*



## Sugar Maple 🌞 🌑

Height: 60'-75' Spread: 40'-50'  
Shape: Oval, rounded  
Foliage: Green to yellow-orange in fall  
Zones: 4-8

### Size

#15 RP

*Acer saccharum* 'Green Mountain'



## Green Mountain® Sugar Maple 🌞 🌑

Height: 70' Spread: 45'  
Shape: Upright oval crown  
Foliage: Dark green; yellow-orange in fall  
Zones: 4-7

### Sizes

1.5" BB	2.5" BB
1.75" BB	3" BB
2" BB	

*Acer saccharum* 'Commemoration'



## Commemoration® Sugar Maple 🌞 🌑

PP 5,079  
Height: 50' Spread: 35'  
Shape: Oval to rounded  
Foliage: Glossy dark green; red to orange in fall  
Zones: 4-7

### Sizes

1.75" BB	3" BB
2" BB	3.5" BB
2.5" BB	

*Acer tataricum* 'GarAnn'



## Hot Wings® Tatarian Maple 🌞 🌑

Height: 20'-25' Spread: 18'-20'  
Shape: Upright branching  
Foliage: Green; orange-red in fall with bright red samaras  
Zones: 3-6

### Sizes

1.75" BB	#25 1.5"
2" BB	#25 1.75"
2.5" BB	#25 2"
3" BB	

*Acer saccharum* 'Bailsta'



## Fall Fiesta® Sugar Maple 🌞 🌑

Height: 60'-70' Spread: 30'-45'  
Shape: Broadly oval  
Foliage: Dark green to orange/red/yellow in fall  
Zones: 3-8

### Sizes

1.75" BB	#25 1.5"
2" BB	#25 1.75"
2.5" BB	#25 2"
3" BB	
3.5" BB	

*Acer truncatum x platanoides*  
'JFS-KW202'



## Crimson Sunset® Maple 🌞 🌑

PP 21838  
Height: 35' Spread: 25'  
Shape: Upright oval  
Foliage: Deep purple  
Zones: 4

### Sizes

1.5" BB	#25 1.5"
1.75" BB	#25 1.75"
2" BB	#25 2"
2.5" BB	
3" BB	

**NEW!** New Product

**N** Native to Illinois

**Nativar** Native Cultivar

🌞 Full Sun

🌑 Partial Shade

🌑 Full Shade

BB Balled & Burlapped

RP Root Pouch

SALES & SERVICE CALL 1.800.344.7697



# TREES

*Aesculus x arnoldiana* 'Autumn Splendor'



## Autumn Splendor Horsechestnut

Height: 35' Spread: 25'-30'  
Shape: Upright; oval  
Flower Color: Large yellow  
Foliage: Glossy green; burgundy in fall  
Zones: 3-8

Sizes
#25 1.5" RP
#25 1.75" RP
#25 2" RP

*Aesculus glabra* 'JN Select'



## Early Glow® Ohio Buckeye

Height: 35' Spread: 35'  
Shape: Oval, rounded with age  
Flower Color: Yellow-green  
Foliage: Dark green, red-orange in fall  
Zones: 3-7

Sizes
#25 1.5" RP
#25 1.75" RP
#25 2" RP

*Aesculus glabra*



## Ohio Buckeye

Height: 20'-40' Spread: 20'-40'  
Shape: Broad, oval-rounded  
Flower Color: Greenish-yellow  
Foliage: Dark green, yellow in fall  
Zones: 3-7

Sizes	
#25 1.5" RP	#15 RP
#25 1.75" RP	
#25 2" RP	

*Aesculus pavia*



## Red Buckeye

Height: 15'-20' Spread: 15'-25'  
Shape: Rounded  
Flower Color: Red  
Foliage: Green  
Zones: 4-8

Size
#15 RP

*Aesculus x carnea* 'Fort McNair'



## Fort McNair Horsechestnut

Height: 30'-40' Spread: 20'-30'  
Shape: Compact  
Flower Color: Pink, yellow throats  
Foliage: Dark green; yellow to orange in fall  
Zones: 5-9

Sizes
#25 1.5" RP
#25 1.75" RP
#25 2" RP

*Alnus x spaethii*



## Spaeths Alder

Height: 40'-50' Spread: 25'-30'  
Shape: Pyramidal, broadly rounded  
Foliage: Green; yellow/gold in fall  
Zones: 4-7

Sizes	
1.5" BB	2.5" BB
1.75" BB	3" BB
2" BB	



# TREES

*Amelanchier canadensis*



## Shadblow Serviceberry

Height: 6'-15' Spread: 15'-20'  
Shape: Rounded crown  
Flower Color: White and pink  
Foliage: Yellow-orange in fall  
Zones: 4-7

Sizes
4' Multi-stem BB
5' Multi-stem BB
6' Multi-stem BB

*Amelanchier laevis*



## Allegheny Serviceberry

Height: 15'-25' Spread: 15'-25'  
Shape: Rounded/compact  
Flower Color: White  
Foliage: Green; yellow-orange in fall  
Zones: 4-8

Sizes	
4' Multi-stem BB	7' Multi-stem BB
5' Multi-stem BB	8' Multi-stem BB
6' Multi-stem BB	

*Amelanchier x grandiflora*  
'Autumn Brilliance'



## Autumn Brilliance Serviceberry

PP 5,717  
Height: 20'-25' Spread: 15'-18'  
Shape: Rounded crown  
Flower Color: White  
Foliage: Brilliant red-orange in fall  
Zones: 3-8

Sizes		
4' Multi-stem BB	1.5" BB Tree form	#25 4' Multi-stem
5' Multi-stem BB	1.75" BB Tree form	#25 5' Multi-stem
6' Multi-stem BB	2" BB Tree form	1.5" #20 RP Tree form
7' Multi-stem BB	2.5" BB Tree form	1.75" #20 RP Tree form
8' Multi-stem BB	#15 RP Multi-stem	2" #20 RP Tree form

*Amelanchier x grandiflora*  
'Princess Diana'



## Princess Diana Serviceberry Tree

Height: 15'-20' Spread: 12'-15'  
Shape: Upright, vase-like  
Flower Color: White clusters  
Foliage: Brilliant red in fall  
Zones: 4-9

Sizes
1.5" BB
1.75" BB
2" BB

*Asimina triloba*



## Common Paw Paw

Height: 15'-30' Spread: 15'-30'  
Shape: Pyramidal  
Flower: Burgundy  
Foliage: Green; yellow in fall  
Zones: 5-9

Size
#15 RP



# TREES

*Betula 'Penci-2'*



**Royal Frost® Birch** ●

Height: 40'-50' Spread: 20'-25'  
Shape: Pyramidal  
Foliage: Burgundy to dark purple  
Zones: 4-7

Sizes
6' #25 Clump
7' #25 Clump
8' #25 Clump
10' #25 Clump

*Betula papyrifera 'Oenci'*

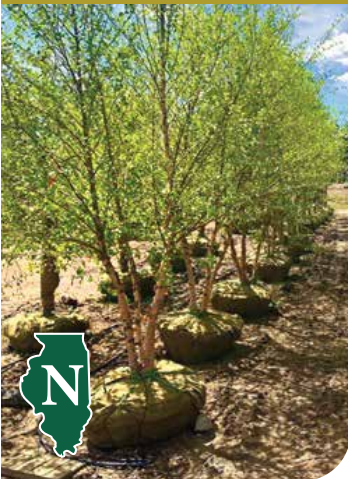


**Renaissance Oasis® Paper Birch** ●●

Height: 50' Spread: 30'  
Shape: Broadly pyramidal to oval  
Foliage: Dark Green  
Zones: 3-5

Sizes	
6' #25 Clump	6' #25 RP Clump
7' #25 Clump	7' #25 RP Clump
8' #25 Clump	8' #25 RP Clump
10' #25 Clump	10' #25 RP Clump
12' #25 Clump	

*Betula nigra*



**River Birch** ●●

Height: 40'-70' Spread: 40'-60'  
Shape: Pyramidal to oval headed; rounded at maturity  
Foliage: Medium to dark green  
Zones: 4-8

Sizes		
6' Clump BB	1.75" BB	#25 1.5"
7' Clump BB	2" BB	#25 1.75"
8' Clump BB	2.5" BB	#25 2"
10' Clump BB	3" BB	1.5" #25 RP Tree
12' Clump BB		1.75" #25 RP Tree
#15 RP Tree		2" #25 RP Tree

*Betula platyphylla 'Fargo'*



**Dakota Pinnacle® Birch** ●●

Height: 40' Spread: 12'  
Shape: Upright, narrow  
Foliage: Dark Green/Yellow in Fall  
Zones: 3-7

Sizes
2" BB
2.5" BB
3" BB

*Betula nigra 'Cully'*



**Heritage® River Birch** ●●

Height: 40' Spread: 30'  
Shape: Pyramidal to oval headed; rounded at maturity  
Foliage: Yellow in fall  
Zones: 4-8

Sizes	
6' #25 Clump	6' #25 RP Clump
7' #25 Clump	7' #25 RP Clump
8' #25 Clump	8' #25 RP Clump
10' #25 Clump	10' #25 RP Clump
	#15 RP Clump

*Betula populifolia 'Whitespire'*



**Whitespire Birch** ●●

Height: 20'-40' Spread: 10'-20'  
Shape: Pyramidal to oval  
Foliage: Dark green, yellow in fall  
Zones: 3-6

Sizes	
6' Clump BB	6' #25 Clump
7' Clump BB	7' #25 Clump
8' Clump BB	8' #25 Clump
10' Clump BB	10' #25 Clump
12' Clump BB	

**NEW!** New Product

**N** Native to Illinois

**Nativar** Native Cultivar

● Full Sun

● Partial Shade

● Full Shade

BB Balled & Burlapped

RP Root Pouch



# TREES

*Carpinus betulus 'Fastigiata'*



## Pyramidal European Hornbeam

Height: 35'-45' Spread: 15'-25'  
Shape: Upright, pyramidal  
Foliage: Green; yellow to brown in the fall  
Zones: 4-8

### Sizes

1.5" BB
1.75" BB
2" BB
2.5" BB

*Carpinus betulus 'Rockhampton Red'*



## Rockhampton Red Hornbeam

Height: 45'-50' Spread: 32'-40'  
Shape: Upright, spreading  
Foliage: Green/Orange-Red in Fall  
Zones: 4-8

### Sizes

1.5" BB
1.75" BB
2" BB
2.5" BB

*Carpinus betulus 'Frans Fontaine'*



## Frans Fontaine European Hornbeam

Height: 35' Spread: 15'  
Shape: Narrow, columnar  
Foliage: Green/Golden-Yellow in Fall  
Zones: 4-8

### Sizes

1.5" BB
1.75" BB
2" BB
2.5" BB
3" BB

*Carpinus caroliniana*



## American Hornbeam/ Blue Beech

Height: 20'-30' Spread: 20'-30'  
Shape: Compact; globular  
Foliage: Dark Green; yellow, orange and scarlet in fall  
Zones: 3-9

### Sizes

1.75" BB
2" BB
2.5" BB
3" BB
#15 RP Tree

*Carpinus betulus 'Lucas'*



## Lucas Columnar European Hornbeam

Height: 30' Spread: 10'  
Shape: Upright, pyramidal  
Foliage: Dark green; yellow to brown in fall  
Zones: 7

### Sizes

1.75" BB
2" BB
2.5" BB
3" BB

*Carya laciniosa*



## Shellbark Hickory

Height: 75'-100' Spread: 50'-75'  
Shape: Oval  
Foliage: Green to golden-brown in fall  
Zone: 4-9

### Size

#15 RP
--------

**NEW!** New Product

**N** Native to Illinois

**Nativar** Native Cultivar

**●** Full Sun

**◐** Partial Shade

**●** Full Shade

**BB** Balled & Burlapped

**RP** Root Pouch

SALES & SERVICE CALL 1.800.344.7697



# TREES



*Carya ovata*



## Shagbark Hickory



Height: 60'-80' Spread: 30'-50'  
Shape: Oval, Irregular  
Foliage: Medium green, yellow in fall  
Zone: 4-9

### Size

#15 RP

*Catalpa x erubescens 'Purpurea'*



## Purple Catalpa



Height: 50' Spread: 50'  
Shape: Dense, spreading  
Flower Color: Yellow and purple  
Foliage: Starts purple, turns to green  
Zones: 5-9

### Size

#15 RP

*Catalpa speciosa*



## Northern Catalpa



Height: 50' Spread: 30'  
Shape: Columnar; dense  
Flower Color: White  
Foliage: Light green  
Zones: 4-7

### Sizes

2" BB	1.75" #25 RP Tree
2.5" BB	2" #25 RP Tree
3" BB	#15 RP
3.5" BB	
4" BB	



# TREES

*Celtis laevigata*



## Sugarberry

Height: 50'-70' Spread: 50'-60'  
Shape: Rounded, vase  
Flower Color: Green-white  
Foliage: Light green; yellow in fall  
Zones: 5-10

### Size

#15 RP

*Celtis occidentalis* 'Chicagoland'



## Chicagoland Hackberry

Height: 40'-50' Spread: 30'-40'  
Shape: Round  
Foliage: Medium green to yellow-gold in fall  
Zone: 3-7

### Sizes

1.75" BB	2.5" BB
2" BB	3" BB

*Celtis occidentalis*



## Common Hackberry

Height: 40'-60' Spread: 40'-45'  
Shape: Rounded spreading crown  
Foliage: Green  
Zones: 2-7

### Sizes

1.5" BB	1.5" #25
1.75" BB	1.75" #25
2" BB	2" #25
2.5" BB	#15 RP
3" BB	
3.5" BB	
4" BB	

*Cercis canadensis* 'Forest Pansy'



## Forest Pansy Redbud

Height: 20'-30' Spread: 25'-35'  
Shape: Round  
Flower Color: Rosy-pink, attracts butterflies and hummingbirds  
Foliage: Purple  
Zone: 5-9

### Sizes

#20 1.5" Tree
#20 1.75" Tree

*Cercis canadensis*



## Eastern Redbud

Height: 20'-30' Spread: 25'-35'  
Shape: Rounded outline  
Flower Color: Rosy-pink  
Foliage: Heart shaped, green  
Zones: 4-9

### Sizes

1.5" BB Tree	4' Multi-stem BB	#20 1.5" Tree
1.75" BB Tree	5' Multi-stem BB	#20 1.75" Tree
2" BB Tree	6' Multi-stem BB	
2.5" BB Tree	7' Multi-stem BB	#25 4' Multi-stem
	8' Multi-stem BB	#25 5' Multi-stem
#15 RP Multi-stem		#25 6' Multi-stem

**NEW!** New Product

 Native to Illinois

 Nativar Native Cultivar

 Full Sun

 Partial Shade

 Full Shade

**BB** Balled & Burlapped

**RP** Root Pouch

SALES & SERVICE CALL 1.800.344.7697





*Thank you for being a part of our  
100th Anniversary Celebration!*





# We are growing for the future!

Each year, we plant tens of thousands of trees and evergreens both in the field and in containers at our 2,500-acre Illinois nursery.

We strive to provide our customers with fair-priced, consistently excellent trees and evergreens sold via honest and timely communication.

## Schedule a tour of the nursery today!

Call or email:

 [sales@kankakeenursery.com](mailto:sales@kankakeenursery.com)

 800.344.7697

 [kankakeenursery.com](http://kankakeenursery.com)



Proudly Growing:

B&B Trees • Container & Root Pouch Trees •  
NATIVE Trees • Evergreens • Flowering Shrubs



# TREES

*Cercis canadensis 'Midnight Express'*



## Midnight Express™ Redbud

Height: 20'-30' Spread: 10'-20'  
Shape: Rounded  
Flower Color: Pink  
Foliage: Burgundy with green undertones  
Zone: 5-9

### Sizes

#20 1.5" Tree

#20 1.75" Tree



*Crataegus ambigua*



## Russian Hawthorn

Height: 18' Spread: 20'  
Flower Color: White clusters  
Foliage: Green, oval  
Zone: 4

### Sizes

1.5" BB

1.75" BB

2" BB

2.5" BB

*Cercis canadensis 'Pink Heartbreaker'*



## Pink Heartbreaker Weeping Redbud

PP 23043  
Height: 10' Spread: 8'  
Shape: Weeping  
Flower Color: Bright pink-purple  
Foliage: Green  
Zone: 4-9

### Sizes

#20 1.5" Tree

#20 1.75" Tree

*Crataegus crus-galli 'Inermis'*



## Thornless Cockspur Hawthorn

Height: 15' Spread: 15'  
Shape: Moderately oval  
Flower Color: White  
Foliage: Thornless; red fruit  
Zones: 4-7

### Sizes

1.5" BB Tree

5' Multi-stem BB

1.75" BB Tree

6' Multi-stem BB

2" BB Tree

7' Multi-stem BB

2.5" BB Tree

8' Multi-stem BB

*Cladrastis kentukea*



## American Yellowwood

Height: 30'-50' Spread: 20'-30'  
Shape: Rounded, upright  
Flower Color: Clusters of white  
Foliage: Dark green  
Zones: 4-8

### Sizes

1.25" BB

2" BB

1.5" BB

2.5" BB

1.75" BB

*Crataegus phaenopyrum*



## Washington Hawthorn

Height: 25'-30' Spread: 20'-25'  
Shape: Broadly oval to rounded; dense  
Flower Color: White  
Foliage: Glossy green  
Zones: 4-8

### Sizes

1.75" BB Tree form

6' Low-branched BB

2" BB Tree form

7' Low-branched BB

2.5" BB Tree form

8' Low-branched BB

3" BB Tree form

10' Low-branched BB

**NEW!** New Product

**N** Native to Illinois

**Nativar** Native Cultivar

**●** Full Sun

**◐** Partial Shade

**●** Full Shade

**BB** Balled & Burlapped

**RP** Root Pouch



# TREES

*Crataegus viridis* 'Winter King'



## Winter King Hawthorn

Height: 30' Spread: 30'  
Shape: Rounded; vase shaped  
Flower Color: White  
Foliage: Dark glossy green; red fruit  
Zones: 4-7

Sizes	
1.75" BB	1.5" #20
2" BB	1.75" #20
2.5" BB	2" #20
3" BB	

*Gleditsia triacanthos* 'Impole'



## Imperial® Honeylocust

Height: 30'-35' Spread: 30'  
Shape: Symmetrical right-angle branches to trunk  
Foliage: Green  
Zones: 4-7

Sizes	
1.5" BB	2.5" BB
1.75" BB	3" BB
2" BB	3.5" BB

*Ginkgo biloba* 'Autumn Gold'



## Autumn Gold Ginkgo

Height: 45' Spread: 35'  
Shape: Broadly spreading, symmetrical  
Foliage: light green to yellow in fall  
Zones: 4-8

Sizes	
1.5" BB	
1.75" BB	
2" BB	
2.5" BB	

*Gleditsia triacanthos* 'Harve'



## Northern Acclaim® Honeylocust

Height: 45' Spread: 35'  
Shape: Upright, spreading  
Foliage: Green  
Zones: 3-6

Sizes	
1.75" BB	
2" BB	
2.5" BB	

*Ginkgo biloba* 'PNI 2720'



## Princeton Sentry® Ginkgo

Height: 60' Spread: 25'  
Shape: Upright  
Foliage: Medium green; yellow in fall  
Zones: 4-8

Sizes	
1.5" BB	
1.75" BB	
2" BB	
2.5" BB	

*Gleditsia triacanthos* 'Shademaster'



## Shademaster® Honeylocust

Height: 50'-60' Spread: 30'-35'  
Shape: Symmetrical  
Foliage: Dark green  
Zones: 4-7

Sizes	
1.5" BB	2.5" BB
1.75" BB	3" BB
2" BB	

**NEW!** New Product

**N** Native to Illinois

**Nativar** Native Cultivar

☀ Full Sun

☀ Partial Shade

☀ Full Shade

BB Balled & Burlapped

RP Root Pouch

SALES & SERVICE CALL 1.800.344.7697



# TREES

*Gleditsia triacanthos 'Skycole'*



## Skyline® Honeylocust

Height: 45' Spread: 35'  
Shape: Pyramidal  
Foliage: Dark green  
Zones: 4-7

Sizes	
1.75" BB	1.5" #25
2" BB	1.75" #25
2.5" BB	2" #25
3" BB	#15 RP
3.5" BB	
4" BB	

*Gymnocladus dioicus 'Espresso-JFS'*



## Espresso™ Kentucky Coffeetree

Height: 50' Spread: 35'  
Shape: Oval, upright  
Foliage: Medium green  
Zones: 4-8

Sizes	
1.5" BB	1.5" #25
1.75" BB	1.75" #25
2" BB	2" #25
2.5" BB	
3" BB	

*Gymnocladus dioicus*



## Kentucky Coffeetree

Height: 40'-50' Spread: 20'-25'  
Shape: Vertically ascending branches  
Foliage: Green  
Zones: 4-8

Sizes	
1.75" BB	3" BB
2" BB	
2.5" BB	#15 RP

*Gymnocladus dioicus 'Morton'*



## Skinny Latte® Kentucky Coffeetree

Height: 50' Spread: 20'  
Shape: Upright  
Foliage: Green; yellow in fall  
Zones: 4-8

Sizes	
1.75" BB	
2" BB	
2.5" BB	
#15 RP	

*Gymnocladus dioicus 'McKBranded'*



## Decaf® Kentucky Coffeetree

Height: 45'-50' Spread: 40'-50'  
Shape: Upright rounded  
Foliage: Medium dark green  
Flower Color: Green/white  
Zones: 3-8

Sizes	
1.5" BB	2.5" BB
1.75" BB	3" BB
2" BB	#15 RP

*Koelreuteria paniculata*



## Goldenrain Tree

Height: 20'-30' Spread: 25'-35'  
Shape: Upright, vase-shaped  
Flower Color: Gold  
Foliage: Green, yellow-orange in fall  
Zones: 6-9

Sizes	
1.5" #20	
1.75" #20	
2" #20	

**NEW!** New Product

**N** Native to Illinois

**Nativar** Native Cultivar

**☉** Full Sun

**☪** Partial Shade

**☛** Full Shade

**BB** Balled & Burlapped

**RP** Root Pouch



# TREES

*Liquidambar styraciflua*



## American Sweetgum ●

Height: 80' Spread: 60'  
Shape: Upright oval  
Foliage: Green, showy in fall  
Zones: 5-9

Sizes
#15 RP

*Liriodendron tulipifera*



## Tuliptree ●

Height: 60'-90' Spread: 30'-50'  
Shape: Pyramidal to broad  
Flower Color: Yellow; tulip-like  
Foliage: Bright green  
Zones: 4-9

Sizes	
1.75" BB	3" BB
2" BB	3.5" BB
2.5" BB	#15 RP

*Liquidambar styraciflua*  
'Slender Silhouette'



## Slender Silhouette Sweetgum ●

Height: 50'-60' Spread: 6'  
Shape: Tightly columnar  
Foliage: Green with mix of purple, red orange and yellow in fall  
Zones: 5-9

Sizes
1.75" BB
2" BB
2.5" BB
3" BB

*Maclura pomifera* 'White Shield'



## White Shield Osage Orange ●

Height: 30'-35' Spread: 30'-35'  
Shape: Upright spreading  
Foliage: Glossy, dark green to yellow in fall  
Zones: 4-9

Sizes
1.75" BB
2" BB
2.5" BB
3" BB

*Liquidambar styraciflua* 'Worplesdon'



## Worplesdon American Sweetgum ●

Height: 40' Spread: 25'  
Shape: Pyramidal, upright  
Flower Color: Dark green to brilliant orange and purple in the fall  
Zones: 5-9

Sizes	
1.75" BB	2.5" BB
2" BB	3" BB

*Magnolia* 'Jane'



## Jane Magnolia ●

Height: 10'-15' Spread: 10'  
Shape: Shrubby  
Flower Color: Purple-red opening to white  
Foliage: Medium green  
Zones: 4-7

Size
#15 RP Multistem



# TREES

*Magnolia stellata 'Royal Star'*



## Royal Star Magnolia

Height: 15'-20' Spread: 15'-20'  
Shape: Upright branching  
Flower Color: White  
Zones: 4-8

### Size

#15 RP Multistem

*Malus 'Adirondack'*



## Adirondack Crabapple

Height: 15'-18' Spread: 6'-8'  
Shape: Densely upright  
Flower Color: White  
Foliage: Medium green  
Zones: 4-8

### Sizes

1.5" BB

1.75" BB

2" BB

2.5" BB

*Magnolia virginiana*



## Sweetbay Magnolia

Height: 10'-20' Spread: 10'-20'  
Shape: Irregular, upright  
Flower Color: White/cream  
Foliage: Bright green  
Zones: 5-9

### Size

#15 RP Multistem

*Malus 'Coralcole'*



## Coralburst Crabapple

Height: 15' Spread: 15'  
Shape: Compact; dense; rounded  
Flower Color: Rose pink  
Foliage: Dark green; fruit is bronze  
Zones: 3-7

### Size

# 15 RP Top-graft

*Malus 'Adams'*



## Adams Crabapple

Height: 20' Spread: 20'  
Shape: Rounded; dense  
Flower Color: Pink  
Foliage: Green with reddish tint;  
red fruit  
Zones: 4-7

### Sizes

1.75" BB

2" BB

2.5" BB

3" BB

*Malus 'Donald Wyman'*



## Donald Wyman Crabapple

Height: 20' Spread: 20'  
Shape: Large spreading  
Flower Color: White  
Foliage: Dark green; red fruit  
Zones: 4-7

### Sizes

1.75" BB

2" BB

2.5" BB

3" BB

**NEW!** New Product

**N** Native to Illinois

**Nativar** Native Cultivar

**☉** Full Sun

**☉** Partial Shade

**☉** Full Shade

**BB** Balled & Burlapped

**RP** Root Pouch



# TREES

*Malus x adstringens 'Durpleo'*



## Gladiator™ Crabapple

PP 20,167  
Height: 15'-20' Spread: 8'-10'  
Shape: Columnar, narrow  
Flower Color: Pink, fragrant  
Foliage: Bronze purple  
Fruit: Purple  
Zones: 2-8

NEW  
SIZES

Sizes		
1.5" BB	1.5" #20	5' Multi-stem BB
1.75" BB	1.75" #20	6' Multi-stem BB
2" BB	2" #20	7' Multi-stem BB
2.5" BB		

*Malus 'Perfect Purple'*



## Perfect Purple Crabapple

Height: 18'-20' Spread: 18'-20'  
Shape: Rounded  
Flower Color: Deep-pink  
Foliage: Deep purple  
Fruit: Purple/red  
Zones: 4-8

NEW  
SIZES

Sizes		
1.5" BB		5' Multi-stem BB
1.75" BB		6' Multi-stem BB
2" BB		7' Multi-stem BB
2.5" BB		

*Malus 'JFS KW214MX'*



## Ivory Spear® Crabapple

PP 31076  
Height: 18' Spread: 7'  
Shape: Tightly columnar  
Flower Color: White  
Foliage: Dark green, clean and disease-free  
Zones: 4-9

Sizes	
1.5" #20	
1.75" #20	
2" #20	

*Malus ioensis 'Prairie Rose'*



## Prairie Rose Crabapple

Height: 15'-20' Spread: 10'-15'  
Shape: Irregular, spreading  
Flower: Light pink  
Foliage: Green, yellow in fall  
Zones: 3-8

Sizes	
1.5" BB	
1.75" BB	
2" BB	
#15 RP	

*Malus 'Lollizam'*



## Lollipop® Crabapple

Height: 8' Spread: 8'  
Shape: Compact; dwarf; rounded  
Flower Color: White  
Foliage: Dark green  
Zones: 4-8

Size	
# 15 RP Top-graft	

*Malus 'Prairifire'*



## Prairifire Crabapple

Height: 20' Spread: 15'  
Shape: Rounded  
Flower Color: Dark pink  
Foliage: Red maroon; red fruit  
Zones: 4-7

NEW  
SIZES

Sizes		
1.5" BB	1.5" #20	5' Multi-stem BB
1.75" BB	1.75" #20	6' Multi-stem BB
2" BB		7' Multi-stem BB
2.5" BB		

NEW! New Product

N Native to Illinois

Nativar Native Cultivar

Full Sun

Partial Shade

Full Shade

BB Balled & Burlapped

RP Root Pouch

SALES & SERVICE CALL 1.800.344.7697



# TREES

*Malus 'Purple Prince'*



## Purple Prince Crabapple

Height: 20' Spread: 20'  
Shape: Rounded  
Flower Color: Rose-red  
Foliage: Purple bronze turns bronze green; maroon fruit  
Zones: 4-7

Sizes	
1.5" BB	2.5" BB
1.75" BB	3" BB
2" BB	3.5" BB

*Malus 'Jewelcole'*



## Red Jewel® Crabapple

Height: 15' Spread: 12'  
Shape: Moderate vase  
Flower Color: White  
Foliage: Red fruit  
Zones: 4-7

**NEW SIZES**

Sizes		
1.75" BB	1.5" #20	5' Multi-stem BB
2" BB	1.75" #20	6' Multi-stem BB
2.5" BB	2" #20	7' Multi-stem BB
3" BB		

*Malus 'JFS KW213MX'*



## Raspberry Spear® Crabapple

PP 31008  
Height: 20' Spread: 8'  
Shape: Columnar, upright  
Flower: Magenta  
Foliage: Green-purple; bronze-orange in fall  
Zones: 4-9

Sizes
1.5" #20
1.75" #20
2" #20

*Malus 'JFS-KW5'*



## Royal Raindrops® Crabapple

PP 14,375  
Height: 20' Spread: 15'  
Shape: Upright spreading  
Flower Color: Pink  
Foliage: Deep purple  
Zones: 4-7

**NEW SIZES**

Sizes		
1.5" BB	1.5" #20	5' Multi-stem BB
1.75" BB	1.75" #20	6' Multi-stem BB
2" BB	2" #20	7' Multi-stem BB
2.5" BB		5' #25 Multi-stem
		6' #25 Multi-stem

*Malus 'Red Barron'*



## Red Barron Crabapple

PP 8056  
Height: 15'-18' Spread: 6'-8'  
Shape: Narrow, columnar  
Foliage: Reddish-purple  
Flower Color: dark red  
Fruit: Dark red  
Zones: 4-8

Sizes	
1.5" BB	2.5" BB
1.75" BB	3" BB
2" BB	

*Malus 'JFS KW139MX'*



## Ruby Dayze® Crabapple

PP 21232  
Height: 20' Spread: 15'  
Shape: Upright oval  
Flower Color: Dark Pink  
Foliage: Purple  
Zones: 4-8

Sizes
1.5" #20
1.75" #20
2" #20

**NEW!** New Product

**N** Native to Illinois

**Nativar** Native Cultivar

**☉** Full Sun

**☾** Partial Shade

**●** Full Shade

**BB** Balled & Burlapped

**RP** Root Pouch



# TREES

*Malus sargentii* 'Tina'



## Sargent Tina Crabapple

Height: 5' Spread: 6'  
Shape: Round, dwarf  
Flower Color: White  
Foliage: Red fruit  
Zones: 4-7

Sizes
#15 RP Top-graft

*Malus* 'Sutyzam'



## Sugar Tyme® Crabapple

Height: 15'-18' Spread: 12'-15'  
Shape: Upright  
Flower Color: Pink  
Foliage: Green  
Zones: 4-8

Sizes	
1.5" BB	2.5" BB
1.75" BB	3" BB
2" BB	

*Malus* 'Spring Snow'



## Spring Snow Crabapple

Height: 25' Spread: 15'  
Shape: Dense; upright; oval  
Flower Color: White  
Foliage: Medium green  
Zones: 3-7

Sizes		SIZES
1.5" BB	1.5" #20	5' Multi-stem BB
1.75" BB	1.75" #20	6' Multi-stem BB
2" BB	2" #20	7' Multi-stem BB
2.5" BB		
3" BB		

NEW SIZES

*Metasequoia glyptostroboides*



## Dawn Redwood

Height: 70'-100' Spread: 15'-25'  
Shape: Conical  
Foliage: Deep green to red-bronze in fall  
Zones: 4-8

Sizes	
2" BB	3.5" BB
2.5" BB	4" BB
3" BB	

*Malus x* 'Jeflite'



## Starlite® Crabapple

Height: 20'-25' Spread: 15' -20'  
Shape: Upright, rounded  
Flower Color: White  
Foliage: Medium green  
Zones: 2-7

Sizes
1.5" #20
1.75" #20
2" #20

*Nyssa sylvatica*



## Black Tupelo

Height: 30'-50' Spread: 20'-30'  
Shape: Rounded crown  
Foliage: Dark-green; orange and scarlet in fall  
Zones: 3-9

Size
#15 RP

NEW! New Product

N Native to Illinois

Nativar Native Cultivar

Full Sun

Partial Shade

Full Shade

BB Balled & Burlapped

RP Root Pouch

SALES & SERVICE CALL 1.800.344.7697



# TREES

*Nyssa sylvatica 'NSUHH'*



## Green Gable™ Tupelo

PP 22951  
Height: 50' Spread: 20'  
Shape: Upright, densely pyramidal  
Foliage: Dark green, bright red in fall  
Zones: 4-9

Sizes
1.5" #20
1.75" #20
2" #20

*Populus tremuloides*



## Quaking Aspen

Height: 60'-80' Spread: 30'  
Shape: Rounded  
Foliage: Yellow in fall  
Zones: 2-7

Sizes
1.5" RP #25
1.75" RP #25
2" RP #25

*Ostrya virginiana*



## Ironwood/ Hophornbeam

Height: 30'-50' Spread: 15'-25'  
Shape: Pyramidal round  
Foliage: Green; yellow in fall  
Zones: 4-9

Sizes
1.75" BB
2" BB
2.5" BB
3" BB
#15 RP

*Prunus 'Newport'*



## Newport Plum

Height: 20' Spread: 20'  
Shape: Rounded  
Flower Color: Pink  
Foliage: Deep purple  
Zones: 4-8

Sizes
2" BB
2.5" BB
3" BB

*Platanus x acerifolia 'Morton Circle'*



## Exclamation!™ Planetree

Height: 60' Spread: 30'  
Shape: Uniform upright  
Foliage: Rich green  
Zones: 4-8

Sizes		
1.75" BB	1.5" #25	1.5" #25 RP
2" BB	1.75" #25	1.75" #25 RP
2.5" BB	2" #25	2" #25 RP
3" BB		
3.5" BB		#15 RP
4" BB		

*Prunus x 'Pisnshzam'*



## Pink Snow Showers™ Weeping Cherry

Height: 25' Spread: 20'-25'  
Shape: Weeping branches  
Flower Color: Pink  
Foliage: Glossy green; fall - golden  
Zones: 4-8

Sizes
1.5" #20
1.75" #20
2" #20

**NEW!** New Product

**N** Native to Illinois

**Nativar** Native Cultivar

Full Sun

Partial Shade

Full Shade

BB Balled & Burlapped

RP Root Pouch



# TREES

*Prunus virginiana 'Canada Red'*



## Canada Red Chokecherry

Height: 25' Spread: 20'  
Shape: Broad pyramidal  
Flower Color: White  
Foliage: Dense green; turns purple in late spring; purple fruit  
Zones: 2-6

### Sizes

2" BB

2.5" BB

3" BB

*Quercus alba*



## White Oak

Height: 50'-80' Spread: 50'-80'  
Shape: Young pyramidal; maturing to spreading crown  
Foliage: Red in fall  
Zones: 3-9

### Sizes

1.5" BB

1.75" BB

2" BB

2.5" BB

#15 RP

*Prunus 'P002S'*



## Sucker Punch® Chokecherry

PP 25767  
Height: 20'-30' Spread: 18'-20'  
Shape: Rounded  
Flower Color: White  
Foliage: Deep purple  
Zones: 3-8

### Sizes

1.75" BB

2.5" BB

2" BB

3" BB

*Quercus bicolor 'JFS-KW12'*



## American Dream® Oak

PP 23632  
Height: 50' Spread: 40'  
Shape: Broadly pyramidal  
Foliage: Bright Green, yellow in fall  
Zones: 4-8

### Sizes

1.75" BB

2" BB

2.5" BB

*Ptelea trifoliata*



## Wafer-Ash/ Common Hop Tree



PP 19,564  
Height: 20'-25' Spread: 5'-6'  
Shape: Columnar  
Flower Color: White  
Foliage: Dark purple  
Zones: 4-9

### Size

#15 RP

*Quercus bicolor 'Bonnie and Mike'*



## Beacon® Oak

Height: 40' Spread: 15'  
Shape: Upright, narrow  
Foliage: Green, yellow in fall  
Zones: 4-8

### Sizes

1.75" BB

2" BB

2.5" BB

**NEW!** New Product

**N** Native to Illinois

**Nativar** Native Cultivar

Full Sun

Partial Shade

Full Shade

**BB** Balled & Burlapped

**RP** Root Pouch

SALES & SERVICE CALL 1.800.344.7697



# TREES



*Quercus bicolor* 'KB Crystal'



## K.B. Crystal Oak



Height: 40' Spread: 20'  
Shape: Compact, uniform  
Foliage: Glossy green  
Zones: 4-8

Sizes
2" BB
2.5" BB
3" BB

*Quercus bicolor*



## Swamp White Oak



Height: 45' Spread: 45'  
Shape: Broad; open crown  
Foliage: Dark shiny green  
Zones: 4-8

Sizes	
1.75" BB	1.5" #25
2" BB	1.75" #25
2.5" BB	2" #25
3" BB	#15 RP
3.5" BB	
4" BB	

*Quercus coccinea*



## Scarlet Oak



Height: 70'-75' Spread: 40'-50'  
Foliage: Scarlet in fall  
Shape: Rounded; open at maturity  
Zones: 4-7

Sizes	
1.75" BB	3" BB
2" BB	3.5" BB
2.5" BB	



# TREES

*Quercus ellipsoidalis*



**Northern Pin Oak** ●

Height: 55' Spread: 40'  
Shape: Broad pyramidal to oval  
Foliage: Green; red in fall  
Zones: 4-7

Sizes	
1.5" BB	3" BB
1.75" BB	3.5" BB
2" BB	4" BB
2.5" BB	#15 RP

*Quercus macrocarpa*



**Bur Oak** ●

Height: 70'-80' Spread: 70'-80'  
Shape: Broad-spreading  
Foliage: Dark green  
Zones: 3-8

Sizes	
1.75" BB	1.5" #25 RP
2" BB	1.75" #25 RP
2.5" BB	2" #25 RP
3" BB	#15 RP
3.5" BB	

*Quercus imbricaria*



**Shingle Oak** ●

Height: 50'-60' Spread: 40'  
Shape: Broad; oval  
Foliage: Long, dark green lobed  
Zones: 4-8

Sizes	
1.75" BB	3.5" BB
2" BB	4" BB
2.5" BB	#15 RP
3" BB	

*Quercus michauxii*



**Swamp Chestnut Oak**



Height: 80' Spread: 60'  
Shape: Broad spreading  
Foliage: Green; red in fall  
Zones: 5-9

Size
#15 RP

*Quercus x macdanielii* 'Clemons'



**Heritage® Oak** ●

Height: 50'-60' Spread: 35'-40'  
Shape: Pyramidal, rounded  
Foliage: Dark green  
Zones: 4-8

Sizes	
1.5" BB	3.5" BB
1.75" BB	4" BB
2" BB	1.5" #25 RP
2.5" BB	1.75" #25 RP
3" BB	2" #25 RP

*Quercus muehlenbergii*



**Chinkapin Oak** ●

Height: 40'-50' Spread: 50'  
Shape: Open; round  
Foliage: Dark green  
Zones: 5-7

Sizes	
1.75" BB	3.5" BB
2" BB	4" BB
2.5" BB	#15 RP
3" BB	

**NEW!** New Product

**N** Native to Illinois

**Nativar** Native Cultivar

● Full Sun

● Partial Shade

● Full Shade

**BB** Balled & Burlapped

**RP** Root Pouch

SALES & SERVICE CALL 1.800.344.7697



# TREES

*Quercus robur x bicolor 'Nadler'*



## Kindred Spirit® Oak

Height: 30' Spread: 6'  
Shape: Tightly columnar  
Foliage: Medium green  
Zones: 4

Sizes	
1.75" BB	1.5" #25 RP
2" BB	1.75" #25 RP
2.5" BB	#15 RP

*Quercus shumardii*



## Shumard Oak

Height: 40'-60' Spread: 30'-40'  
Foliage: Shiny dark green  
Zones: 5-9

Sizes	
1.75" BB	3" BB
2" BB	3.5" BB
2.5" BB	#15 RP

*Quercus robur x bicolor 'Long'*



## Regal Prince® Oak

Height: 40'-60' Spread: 20'-25'  
Shape: Upright; columnar  
Foliage: Glossy green  
Zones: 4-9

Sizes	
1.75" BB	1.5" #25 RP
2" BB	1.75" #25 RP
2.5" BB	2" #25 RP
3" BB	#15 RP

*Salix alba 'Tristis'*



## Niobe Weeping Willow

Height: 50' Spread: 50'  
Shape: Broadly domed; weeping  
Foliage: Golden yellow  
Zones: 4-8

Size
#15 RP

*Quercus rubra*



## Northern Red Oak

Height: 60'-75' Spread: 60'-75'  
Shape: Round top; symmetrical  
Foliage: Dark green; red in fall  
Zones: 4-8

Sizes	
1.75" BB	1.5" #25 RP
2" BB	1.75" #25 RP
2.5" BB	2" #25 RP
3" BB	#15 RP
3.5" BB	
4" BB	

*Sassafras albidum*



## Common Sassafras

Height: 30'-60' Spread: 25'-40'  
Shape: Pyramidal  
Flower: Yellow-green  
Foliage: Green; yellow-red in fall  
Zones: 4-9

Size
#15 RP

**NEW!** New Product

**N** Native to Illinois

**Nativar** Native Cultivar

**☀** Full Sun

**☀️** Partial Shade

**🌑** Full Shade

**BB** Balled & Burlapped

**RP** Root Pouch



# TREES

*Syringa reticulata*



## Japanese Tree Lilac ●

Height: 20'-30' Spread: 15'-25'  
Shape: Oval to round crown  
Flower Color: Cream white  
Foliage: Sharply tipped; green  
Zones: 3-7

### Sizes

4' Multi-stem BB	7' Multi-stem BB
5' Multi-stem BB	8' Multi-stem BB
6' Multi-stem BB	

*Taxodium distichum*



## Common Bald Cypress ●

Height: 50'-70' Spread: 20'-40'  
Shape: Pyramidal  
Foliage: Green needles; orange-bronze in fall  
Zones: 4-9

### Sizes

2" BB	3.5" BB
2.5" BB	4" BB
3" BB	#15 RP

*Syringa reticulata* 'Ivory Silk'



## Ivory Silk® Japanese Tree Lilac ●

Height: 20' Spread: 15'  
Shape: Compact  
Flower Color: Cream white  
Foliage: Dark green  
Zones: 3-8

### Sizes

1.5" BB	#20 1.5"	5' BB Multi-stem
1.75" BB	#20 1.75"	6' BB Multi-stem
2" BB	#20 2"	7' BB Multi-stem
2.5" BB		
3" BB		

*Taxodium distichum* 'Mickelson'



## Shawnee Brave™ Bald Cypress ●

Height: 50'-70' Spread: 15'-20'  
Shape: Narrow pyramidal  
Foliage: Green needles; orange-bronze in fall  
Zones: 4-9

### Sizes

1.75" BB	1.5" #25 RP
2" BB	1.75" #25 RP
2.5" BB	2" #25 RP
3" BB	
3.5" BB	

*Syringa reticulata* 'Bailnce'



## Snowdance™ Japanese Tree Lilac ●

PP 20,458  
Height: 10'-20' Spread: 10'-20'  
Shape: Rounded  
Flower Color: White  
Foliage: Dark green  
Zones: 3-7

### Sizes

1.5" BB	2.5" BB
1.75" BB	3" BB
2" BB	

*Tilia americana* 'McKSentry'



## American Sentry® Linden ●

Height: 40'-45' Spread: 25'-30'  
Shape: Upright; narrow  
Foliage: Dark Green; deep yellow in fall  
Zones: 3-8

### Sizes

1.5" BB	3" BB
1.75" BB	3.5" BB
2" BB	#15 RP
2.5" BB	

**NEW!** New Product

**N** Native to Illinois

**Nativar** Native Cultivar

● Full Sun

● Partial Shade

● Full Shade

BB Balled & Burlapped

RP Root Pouch

SALES & SERVICE CALL 1.800.344.7697



# TREES

*Tilia americana* 'Redmond'



## Redmond Linden



Height: 50'-70' Spread: 35'-45'  
Shape: Pyramidal; dense  
Foliage: Dark green  
Zones: 4-8

Sizes	
1.5" BB	2.5" BB
1.75" BB	3" BB
2" BB	3.5" BB

*Tilia tomentosa*



## Silver Linden



Height: 50'-70' Spread: 25'-50'  
Shape: Upright; oval  
Foliage: Dark green  
Zones: 4-7

Sizes	
1.75" BB	3" BB
2" BB	3.5" BB
2.5" BB	4" BB

*Tilia cordata* 'Greenspire'



## Greenspire™ Littleleaf Linden



P.P. 2,086  
Height: 40' Spread: 30'  
Shape: Pyramidal; dense  
Foliage: Shiny dark green  
Zones: 4-7

Sizes	
1.75" BB	4" BB
2" BB	1.5" #25 RP
2.5" BB	1.75" #25 RP
3" BB	2" #25 RP
3.5" BB	

*Tilia tomentosa* 'Sterling'



## Sterling Silver Linden



Height: 45' Spread: 30'  
Shape: Broadly oval  
Foliage: Dark green, silver undersides, gold in fall  
Zones: 5-9

Sizes	
1.75" BB	3" BB
2" BB	3.5" BB
2.5" BB	4" BB

*Tilia x flavescens* 'Glenleven'



## Glenleven Linden



Height: 50' Spread: 35'  
Shape: Pyramidal to oval  
Foliage: Green  
Zones: 4-7

Sizes	
1.75" BB	3" BB
2" BB	3.5" BB
2.5" BB	

*Tilia zamoyskiana* 'Centennial'



## Centennial™ Linden



Height: 70' Spread: 30'  
Shape: Pyramidal  
Flower Color: Creamy yellow, fragrant  
Foliage: Deep green, heart shaped  
Zones: 4-8

Sizes	
2" BB	
2.5" BB	
3" BB	
#15 RP	

**NEW!** New Product

**N** Native to Illinois

**Nativar** Native Cultivar

Full Sun

Partial Shade

Full Shade

**BB** Balled & Burlapped

**RP** Root Pouch



# TREES

*Ulmus americana* 'Jefferson'



## Jefferson American Elm

Height: 40'-50' Spread: 40'-50'  
Shape: Vase-shaped, broad-rounded  
Foliage: Dark green  
Zones: 4-9

Sizes	
1.75" BB	3" BB
2" BB	3.5" BB
2.5" BB	4" BB

*Ulmus davidiana* 'Morton'



## Accolade™ Elm

Height: 70' Spread: 40'-50'  
Shape: Upright; spreading  
Foliage: Deep green  
Zones: 4-7

Sizes	
1.75" BB	3" BB
2" BB	3.5" BB
2.5" BB	4" BB

*Ulmus americana* 'New Harmony'



## New Harmony Elm

Height: 70' Spread: 65'  
Shape: Vase; arching limbs  
Foliage: Medium green  
Zones: 4-8

Sizes	
1.5" BB	2.5" BB
1.75" BB	3" BB
2" BB	3.5" BB

*Ulmus* 'Frontier'



## Frontier Elm

Height: 25'-40' Spread: 15'  
Shape: Upright; pyramidal  
Foliage: Green; sharp red-purple in fall  
Zones: 4-10

Sizes	
2" BB	#25 1.5"
2.5" BB	#25 1.75"
3" BB	#25 2"
3.5" BB	
4" BB	

*Ulmus americana* 'Princeton'



## Princeton American Elm

Height: 65' Spread: 50'  
Shape: Upright; vase  
Foliage: Dark Green; yellow in fall  
Zones: 4-9

Sizes	
1.75" BB	4" BB
2" BB	1.5" #25 RP
2.5" BB	1.75" #25 RP
3" BB	2" #25 RP
3.5" BB	#15 RP

*Ulmus japonica x pumila* 'New Horizon'



## New Horizon Elm

PP 8,684  
Height: 40' Spread: 25'  
Shape: Compact; upright; oval  
Foliage: Deep green; slightly rusty red in fall  
Zones: 4-7

Sizes	
1.75" BB	3.5" BB
2" BB	4" BB
2.5" BB	#15 RP
3" BB	

**NEW!** New Product

**N** Native to Illinois

**Nativar** Native Cultivar

☉ Full Sun

☪ Partial Shade

● Full Shade

**BB** Balled & Burlapped

**RP** Root Pouch

SALES & SERVICE CALL 1.800.344.7697



# TREES

*Ulmus wilsoniana* 'Prospector'



## Prospector Elm

Height: 40'-50' Spread: 20'-25'  
Shape: Vase-shaped  
Foliage: Emerges orange-red,  
maturing to green  
Zones: 4-10

Sizes	
2" BB	3.5" BB
2.5" BB	4" BB
3" BB	

*Ulmus* 'Morton Glossy'



## Triumph™ Elm

Height: 55' Spread: 45'  
Shape: Upright; oval to vase  
Foliage: Dark Green; yellow in fall  
Zones: 5-7

Sizes	
2" BB	#25 1.5"
2.5" BB	#25 1.75"
3" BB	#25 2"
3.5" BB	#15 RP
4" BB	

*Zelkova serrata* 'Musashino'



## Musashino Japanese Zelkova

Height: 45' Spread: 15'  
Shape: Tightly columnar  
Flower Color: White  
Foliage: Fine textured; rusty-red  
fall color  
Zones: 5-9

Sizes	
1.75" BB	3" BB
2" BB	3.5" BB
2.5" BB	4" BB





# SHRUBS

*Cornus kousa*



## Kousa Chinese Dogwood



Height: 30' Spread: 30'  
Shape: Shrubby, rounded  
Flower Color: White, showy  
Foliage: Green  
Zones: 5-8

### Sizes

4' #25 Multi-stem

5' #25 Multi-stem

*Hamamelis virginiana*



## Common Witch Hazel



Height: 15' Spread: 12'-15'  
Shape: Irregular crown; crooked branches  
Flower Color: Yellow in fall  
Foliage: Fall yellow  
Zones: 4-8

### Sizes

3' BB Shrub

4' BB Shrub

5' BB Shrub

6' BB Shrub

*Cornus mas*



## Cornelian Cherry Dogwood



Height: 25' Spread: 15'  
Shape: Oval to rounded  
Flower Color: Yellow  
Foliage: Glossy; dark green; red cherry fruit  
Zones: 4-8

### Sizes

3' BB Shrub

4' BB Shrub

5' BB Shrub

6' BB Shrub

*Hamamelis vernalis*



## Vernal Witch Hazel



Height: 10' Spread: 10'  
Shape: Neat; small; dense  
Flower Color: Yellow to red  
Foliage: Yellow in fall  
Zones: 5-8

### Sizes

3' BB Shrub

4' BB Shrub

5' BB Shrub

6' BB Shrub

*Cotinus coggygria 'Royal Purple'*



## Royal Purple Smokebush



Height: 15' Spread: 10'-12'  
Shape: Upright; loose spreading  
Flower Color: Purple  
Foliage: Red-purple; scarlet in fall  
Zones: 5-8

### Size

#15 RP

*Hydrangea paniculata 'Renba'*



## Berry White™ Hydrangea



PP 28509  
Height: 6'-7' Spread: 4'-5'  
Shape: Upright  
Flower Color: Two-toned white and hot pink  
Foliage: Green  
Zones: 3-8

### Size

#10 Tree form



# SHRUBS

*Hydrangea paniculata 'Limelight'*



## Limelight Hydrangea Tree



USPP 12,874; CAN 2,319  
Height: 6'-8' Spread: 5'-7'  
Shape: Upright; slightly compact  
Flower Color: Lime-green  
turning pink  
Foliage: Medium green  
Zones: 3-8

Size

#10 Tree form

*Hydrangea paniculata 'SMHPLQF'*



## Little Quick Fire Hydrangea Tree

Height: 6' Spread: 4'  
Shape: Upright  
Flower White to deep pink  
Foliage: Green  
Zones: 3-9

Size

#10 Tree form

*Hydrangea paniculata 'Jane'*



## Little Lime® Hydrangea Tree



Height: 3'-6' Spread: 3'-5'  
Shape: Upright  
Flower Color: Lime-green turning  
pink and hot pink  
Foliage: Medium green  
Zones: 3-8

Size

#10 Tree form

*Hydrangea paniculata 'Bulk'*



## Quick Fire® Hydrangea Tree



USPP 16,812; CAN 3,398  
Height: 6'-8' Spread: 6'-8'  
Shape: Upright  
Flower Color: Deep pink; early  
Foliage: Medium green  
Zones: 4-8

Size

#10 Tree form



**NEW!** New Product

**N** Native to Illinois

**Nativar** Native Cultivar

Full Sun

Partial Shade

Full Shade

**BB** Balled & Burlapped

**RP** Root Pouch



# SHRUBS

*Hydrangea paniculata 'Renhy'*



**Vanilla Strawberry™  
Hydrangea Tree** ●

PP 20,670  
Height: 6'-7' Spread: 4'-5'  
Shape: Upright  
Flower Color: White turning dark pink  
Foliage: Dark green  
Zones: 4-8

**Size**

#10 Tree form

*Viburnum prunifolium*



**Blackhaw  
Viburnum** ● ● ●

Height: 12'-15' Spread: 8'-12'  
Shape: Round-headed  
Flower Color: Cream white  
Foliage: Dark green; red and purple in fall  
Zones: 5-8

**Sizes**

3' BB	4' #25 Shrub
4' BB	5' #25 Shrub
5' BB	6' #25 Shrub
6' BB	

*Syringa meyeri 'Palibin'*



**Dwarf Korean  
Lilac Tree** ● ●

Height: 4'-5' Spread: 5'-7'  
Shape: Compact; rounded  
Flower Color: Violet-purple  
Foliage: Glossy  
Zones: 3-7

**Size**

#10 Tree form



**NEW!** New Product

**N** Native to Illinois

**Nativar** Native Cultivar

● Full Sun

● Partial Shade

● Full Shade

BB Balled & Burlapped

RP Root Pouch

SALES & SERVICE CALL 1.800.344.7697



# EVERGREENS

*Buxus 'Green Velvet'*



## Green Velvet Boxwood



Height: 3'-4' Spread: 3'-4'  
Shape: Rounded  
Foliage: Bright green  
Zones: 4-9

### Sizes

12" BB

15" BB

18" BB

21" BB

24" BB

*Juniperus x 'JNBlue Select'*



## Star Power™ Juniper



Height: 17' Spread: 7'-9'  
Shape: Upright  
Foliage: Blue green  
Zones: 3-9

### Sizes

6' BB

7' BB

8' BB

9' BB

*Juniperus chinensis 'Blue Point'*



## Blue Point Juniper



Height: 12'-14' Spread: 8'-10'  
Shape: Pyramidal/columnar  
Foliage: Blueish/green  
Zones: 4-9

### Sizes

5' BB

8' BB

6' BB

9' BB

7' BB

#15 RP

*Juniperus virginiana*



## Eastern Red Cedar



Height: 40'-50' Spread: 8'-20'  
Shape: Upright, pyramidal  
Foliage: Blue-Green, berry-like cones  
Zones: 3-9

### Sizes

6' BB

7' BB

8' BB

*Juniperus chinensis 'Spartan'*



## Spartan Juniper



Height: 15' Spread: 3'-5'  
Shape: Upright, narrow  
Foliage: Bright green  
Zones: 4-9

### Sizes

5' BB

8' BB

6' BB

9' BB

7' BB

*Juniperus virginiana 'Hetzii'*



## Hetzii Columnar Juniper



Height: 12'-15' Spread: 4'-6'  
Shape: Symmetrical, conical-pyramidal  
Foliage: Bright green  
Zones: 3-9

### Sizes

6' BB

7' BB

8' BB

9' BB

**NEW!** New Product

Native to Illinois

Nativar Native Cultivar

Full Sun

Partial Shade

Full Shade

**BB** Balled & Burlapped

**RP** Root Pouch



# EVERGREENS

*Juniperus virginiana 'Hillspire'*



## Hillspire Juniper

Height: 12'-15' Spread: 4'-6'  
Shape: Narrow pyramidal  
Foliage: Bright green, silvery  
berry-type cones  
Zones: 4-7

Sizes	
5' BB	8' BB
6' BB	9' BB
7' BB	

*Juniperus virginiana 'Taylor'*



## Taylor Juniper

Height: 15'-20' Spread: 3'-4'  
Shape: Narrow columnar  
Foliage: Rich blue-green  
Zones: 3-8

Sizes
6' BB
7' BB
8' BB

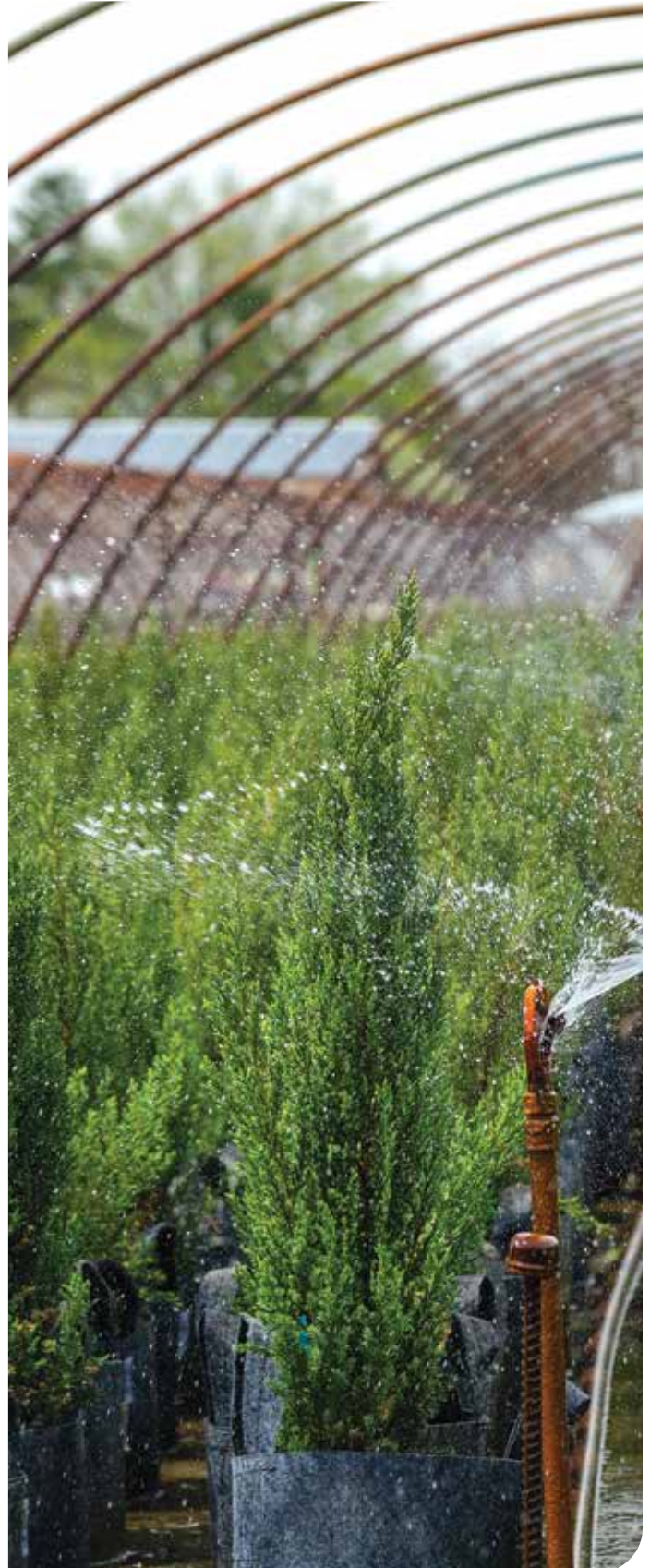
*Picea abies*



## Norway Spruce

Height: 40'-60' Spread: 25'-30'  
Shape: Pyramidal when young  
Foliage: Bright green when young,  
changing to dark green at maturity  
Zones: 2-7

Size
#15 RP



**NEW!** New Product

**N** Native to Illinois

**Nativar** Native Cultivar

**●** Full Sun

**◐** Partial Shade

**●** Full Shade

**BB** Balled & Burlapped

**RP** Root Pouch

SALES & SERVICE CALL 1.800.344.7697



# EVERGREENS

*Thuja occidentalis 'Brabant'*



## Brabant Arborvitae

Height: 15'-20' Spread: 6'-8'  
Foliage: Green  
Zones: 3-7

### Sizes

5' BB

6' BB

7' BB

*Thuja occidentalis 'Smaragd'*



## Emerald Green Arborvitae

Height: 15' Spread: 3'-4'  
Shape: Narrow pyramidal  
Foliage: Dense emerald green  
Zones: 5-8

### Sizes

4' BB

5' BB

6' BB

7' BB

#15 RP

*Thuja occidentalis 'Nigra'*



## Dark Green (Nigra) Arborvitae

Height: 20'-30' Spread: 4'-5'  
Shape: Dense pyramidal  
Foliage: Dark green  
Zones: 3-7

### Sizes

4' BB

5' BB

6' BB

7' BB

8' BB

*Thuja occidentalis 'Pyramidalis'*



## Pyramidal Arborvitae

Height: 20'-30' Spread: 6'  
Shape: Narrow pyramidal  
Foliage: Soft bright green  
Zones: 3-8

### Sizes

5' BB

6' BB

7' BB

8' BB



**NEW!** New Product

**N** Native to Illinois

**Nativar** Native Cultivar

☀ Full Sun

☀☾ Partial Shade

☾ Full Shade

BB Balled & Burlapped

RP Root Pouch



# EVERGREENS

*Thuja occidentalis 'Bailjohn'*



## Technito®

### Arborvitae ●●●

PP 15,850  
Height: 8'-10' Spread: 4'-5'  
Foliage: Dark green  
Zones: 3-7



Sizes
3' BB
4' BB

*Thuja standishii x plicata 'Green Giant'*



## Green Giant

### Arborvitae ●●●

Height: 40'-60' Spread: 12'-20'  
Foliage: Dense, rich green  
Zones: 5-7

Sizes	
6' BB	9' BB
7' BB	10' BB
8' BB	#15 RP

*Thuja occidentalis 'Techny'*



## Techny Arborvitae ●

Height: 20'-30' Spread: 6'-8'  
Shape: Broad pyramidal  
Foliage: Dark green  
Zones: 3-8

Sizes
4' BB
5' BB
6' BB
7' BB
#15 RP



*Kankakee Nursery continues to be  
the Midwest's leading producer of  
premium-grade, homegrown arborvitae!*



**NEW!** New Product

**N** Native to Illinois

**Nativar** Native Cultivar

● Full Sun

●● Partial Shade

●●● Full Shade

BB Balled & Burlapped

RP Root Pouch

SALES & SERVICE CALL 1.800.344.7697





P.O. Box 288  
Aroma Park, IL 60910

Visit our website to browse  
our plant library, see  
pricing and availability,  
and place an online order!  
**kankakeenursery.com**

Plus, follow us on social media  
for current news and events!



## CONTACT US:

Weekdays 8am to 4pm CST

No trucks will be loaded from  
noon to 12:30pm or after 3pm.

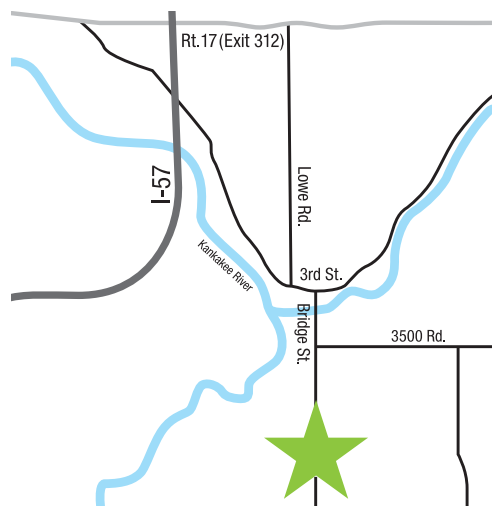
For up-to-date pricing and  
inventory availability, please  
call, email or check our website  
at kankakeenursery.com

 [sales@kankakeenursery.com](mailto:sales@kankakeenursery.com)

 800.344.7697

 [kankakeenursery.com](http://kankakeenursery.com)

PRSRT STD  
US POSTAGE  
**PAID**  
Aroma Park, IL 60910  
Permit No. 10



## Directions to Kankakee Nursery

**4481 S 3250E Rd, Saint Anne, IL 60964**

Kankakee Nursery is conveniently located near Interstate 57 south of Kankakee.

1. Take I-57, Exit 312, Route 17 east and travel one mile to Lowe Road.
2. Turn south (right) on Lowe Road and go three miles to Third Street (stop sign) in Aroma Park.
3. Turn east (left) on Third and travel three blocks to a four-way stop at Bridge St.
4. Take Bridge Street south (right) over the Kankakee River and travel one and one-half miles to Kankakee Nursery.